



Palm Beach County
The Best of Everything.

March 14, 2023

Presented By:

*David L. Ricks, P.E.
County Engineer*

*Joanne M. Keller, P.E.
Deputy County Engineer*

*Steven B. Carrier, P.E.
Assistant County Engineer*

ENGINEERING & PUBLIC WORKS OVERVIEW

Silver Beach Road Project



DEPARTMENT ORGANIZATIONAL CHART



BOARD OF COUNTY COMMISSIONERS
Gregg K. Weiss, Mayor
Maria Sachs, Vice Mayor
Maria G. Marino
Michael Barnett
Marci Woodward
Sara Baxter
Mack Bernard

COUNTY ADMINISTRATOR
Verdenia C. Baker

ASSISTANT COUNTY ADMINISTRATOR
Patrick Rutter

DEPARTMENT OF ENGINEERING AND PUBLIC WORKS

January 19, 2023

Members of the Executive Team shown in red boxes

COUNTY ENGINEER
David Ricks, P.E.

DEPUTY COUNTY ENGINEER
Joanne Keller, P.E.

EXECUTIVE ASSISTANT
Luisa Alarcon

ASSISTANT COUNTY ENGINEER
Steven Carrier, P.E.

TRAFFIC
Mo Al-Turk, P.E., Director

ADMINISTRATIVE SERVICES
Alexis T. Willhite, Director

FISCAL MANAGER
Johnathan Blanco

PUBLIC INFORMATION SERVICES MANAGER
Laura Clersaint

CONSTRUCTION COORDINATION
Albert Hoffman, Director

John Kogelakis, Chief Construction Coordinator

Zach King, Chief Construction Coordinator

LAND DEVELOPMENT
Scott Cantor, P.E., Director

LAND DEVELOPMENT
Olive Bailey, P.E., Assistant Director

PLATTING
Vacant, Senior P.E. Manager

PERMITTING
Patrick Lear, Senior P.E. Manager

ZONING
Werner Vaughan, P.E. Manager

ROADWAY
Morton Rose, P.E., Director

ROADWAY
Kathleen Farrell, P.E., Assistant Director

LOCAL ROADS
Kristine Frazell-Smith, Senior P.E.

THOROUGHFARE ROADS
Maroun Azzi, Senior P.E.

SPECIAL PROJECTS
Will Carey, Non-Registered Senior P.E.

CONTRACTS
Holly Knight, P.E., Manager

RIGHT OF WAY
Tripp Coci, MPA, Manager

ADMIN SUPPORT
Vanessa Jagoo

SURVEY
Craig Pusey, Director

Manager Land Survey, Vacant

Land Surveyor, Registered Gary Wheeler

Land Surveyor, Registered Larry Fish

Land Surveyor, Non-Registered Scott Adams

Land Surveyor, Non-Registered Todd Petback

Land Surveyor, Non-Registered Tim White

STREETSCAPE SECTION
Carl Bengtson, Manager

LANDSCAPE COORDINATOR
Mike Rawls

ROAD SECTION
Craig Lloyd, Superintendent

ROAD SECTION
Brian Powell, Assistant Superintendent

MAINTENANCE DISTRICT I
Paul Lauth, Public Works Supervisor

MAINTENANCE DISTRICT II
Lewerth Johnson, Public Works Supervisor

MAINTENANCE DISTRICT III
Robert Dunker, Public Works Supervisor

MAINTENANCE DISTRICT IV
Aramando Vazquez, Public Works Supervisor

MAINTENANCE DISTRICT V
Mario Rivero, Public Works Supervisor

MATERIAL STOCKYARD
Bill Trout, Public Works Supervisor

STORMWATER OPERATIONS
Cody Hayes, Public Works Supervisor

ROAD & BRIDGE
Adam Faustini, Director

ROAD & BRIDGE
Dan Doyle, Assistant Director

WAREHOUSE
Chase Miller, Materials Manager

SAND TRANSFER OPERATIONS
Ronald Bates, Supervisor

CONSTRUCTION PROJECTS
Vacant, Superintendent

CONSTRUCTION PROJECTS
Darren Pralino, Construction Project Manager

BRIDGE SECTION
Tom Coppini, Superintendent

BRIDGE SECTION
John Myers, Assistant Superintendent

BRIDGE MAINTENANCE
Jeremy Korzeniowski, Maintenance Supervisor

BRIDGE MAINTENANCE
Dennis Furney, Maintenance Supervisor

BRIDGE INSPECTIONS
Mark Davis, Supervisor

BRIDGETENDERS
Nick Evans, Supervisor

BRIDGETENDERS
Sue Welch, Assistant Supervisor

TRAFFIC OPERATIONS
Marc Alica, Superintendent

SIGNAL SHOP
Scott Phibrick, Supervisor

SIGN SHOP
William Kennedy, Supervisor

STRIPING SHOP
Felix Thomas, Supervisor

WAREHOUSE
Trudy Verzyco, Manager

TRAFFIC OPERATIONS
Karen Blanchard, Asst Superintendent

CONSTRUCTION SHOP
Dan Mann, Supervisor

LINE LOCATES
John Letsch

TRAFFIC
Melissa Ackert, P.E., Assistant Director

TRAFFIC SIGNAL AND LIGHTING DESIGN
Fattoush Jafar, Manager

May Cheng, Senior P.E.

TRAFFIC ENGINEERING STUDIOS
Fadi Nassar, P.E., Manager

TRAFFIC DATA
Rob Patane, Supervisor

TRAFFIC ACCIDENT RECORDS
Maritza Lara, Coordinator

GROWTH MANAGEMENT
Quazi Bari, Manager

PERMIT PLAN REVIEW
Bogdan Pionkowski, Senior P.E.

TRAFFIC SIGNAL SYSTEMS
Rasem Anwarid, P.E., Manager

SIGNAL TIMING
Lee Gao, Senior P.E.

ITS UTILITY
Rick Sutton, Coordinator

ITS SYSTEMS ADMIN
Robert Hendrickson, Systems Admin

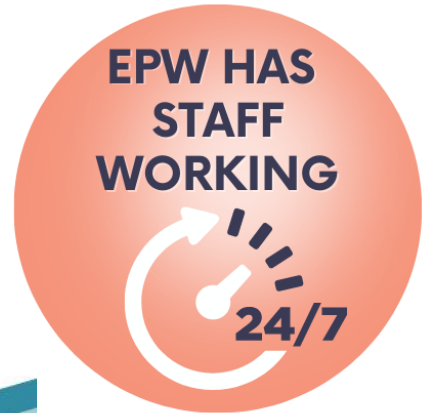


DEPARTMENT SNAPSHOT

The Department operates out of three main offices:

- 2300 N. Jog Road
- 2555 Vista Parkway
- 580 State Market Road, Pahokee

County Engineer, Executive Team and Division Directors



ENGINEERING DEPARTMENT MAIN DIVISIONS

ADMINISTRATION

CONSTRUCTION COORDINATION

LAND DEVELOPMENT

ROAD AND BRIDGE

ROADWAY PRODUCTION

SURVEY

TRAFFIC



DEPARTMENT SNAPSHOT

Number of Positions

2019 458

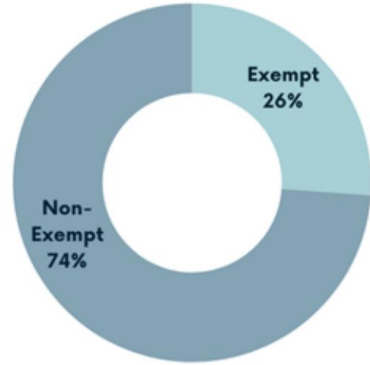
2020 465

2021 469

2022 469

2023 469

Exempt & Non-Exempt



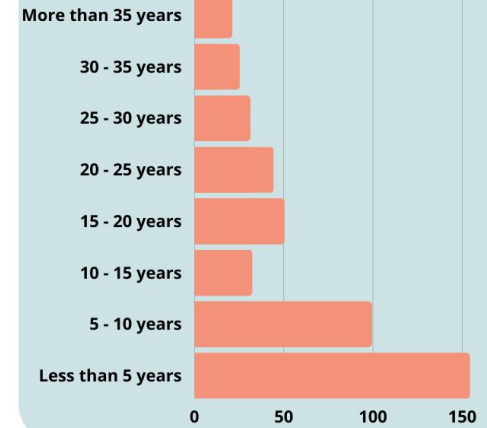
**22 %
FEMALE**



**78 %
MALE**



Tenure with PBC





EPW VISION, MISSION, AND CORE VALUES

VISION

Engineering Infrastructure for the Future



MISSION

Ensuring Palm Beach County Residents Enjoy Safe, Efficient, and Reliable Infrastructure



EPW CORE VALUES

TEAMWORK

At EPW we work together to solve problems.

ACCOUNTABILITY

We always step up to the plate to get the job done. We take ownership and give credit where credit is due.

QUALITY

We take pride in what we do. We strive to be professional, thorough, careful and courteous.

INNOVATION

Explore when a better way presents itself.

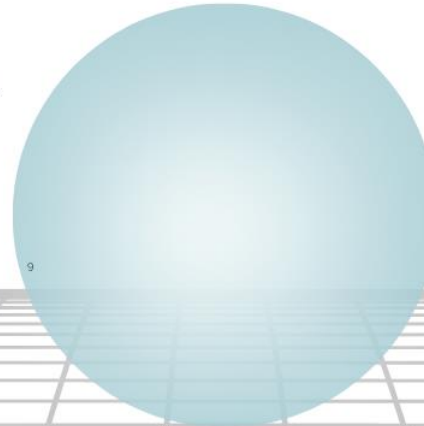
POSITIVITY

It's an attitude!

At EPW, we enjoy what we do and take the time to celebrate with our team.

INTEGRITY

We conduct ourselves in an ethical, moral, honest and honorable way.





EPW VISION, MISSION, AND CORE VALUES

- In 2017, the Engineering and Public Works Department began the journey of improving through the creation of a **Strategic Plan**.
- Over 60% of the Department's employees participated in the surveys to develop strategic goals and the Mission and Vision of the Department.
- These Strategic Priorities were identified as directional tools to help all within the Department to improve performance, to create a culture in which all employees can flourish, and to deliver exceptional service to our customers. The Department's new Strategic Plan was rolled out to all Department employees in August 2018.
- Based on this proven methodology, when starting the process for this third iteration of the Engineering and Public Works' Strategic Plan, again the employees of the Department were surveyed to gather the latest information to identify strengths, weaknesses, opportunities and threats. We revised our strategic teams to focus on the guiding principles from our Mission: **Safety, Efficiency, and Reliability**.
- The next Strategic Plan will be rolled out to all Department employees in **Spring 2023**.





EXECUTIVE OFFICE

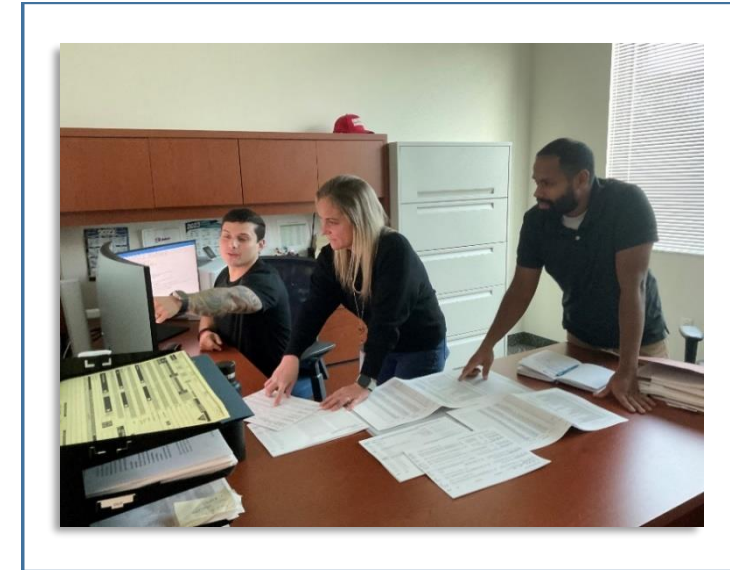
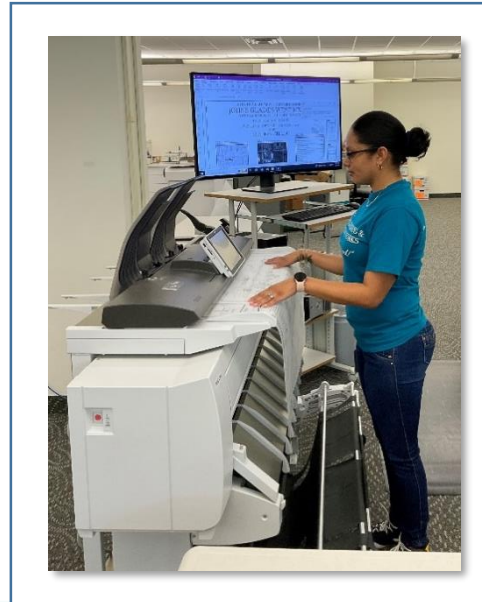


- Responsible for Engineering and Public Works Action Center inquiries.
- Act as the management arm for the entire Department and the liaison between County Administration and the rest of the Department.



ADMINISTRATIVE SERVICES

- The Division oversees all personnel related functions and is responsible for Department-wide Policies and Procedures.
- Serves as the coordinator for information technology and facility needs.
- The Fiscal Section is responsible for the Department's financial activities including:
 - revenue grant
 - operating and capital budgets
 - accident billing
 - daily cashiering functions
 - grant management
 - establishing fiscal controls
 - developing and maintaining accounting systems and reports and purchasing functions
- The Public Information Services Section is responsible for record keeping of our road plans and responding to public information requests.
- Serves as a printing and scanning hub for the entire Department.





CONSTRUCTION COORDINATION

- The Division administers and coordinates the construction and inspection of County projects including thoroughfare roads, bridges, minor street improvements and community development projects.
- Ensures that County, State, and required standards and specifications are applied and adhered to, and present final project acceptance to the Board of County Commissioners.
- Throughout the life of the contract, Construction Coordination serves as the field representative for Palm Beach County.
- Inspectors onsite for all EPW projects to ensure satisfactory construction and installation of Infrastructure



Silver Road Project Overseen by Construction Coordination



CONSTRUCTION COORDINATION

- After receiving the approved construction contracts from Roadway Production and the BCC, the coordination process begins between our office, the contractor, and any stakeholder affected by the project.
- Present on the job sites and are involved in the receipt, filing, and submission of all payment applications and invoices sent to finance.
- At the completion of the project, Construction Coordination's role is to verify accuracy of required documentation and prepare the project for the Contract Review Committee and final payment records to Finance.
- Inspects permits issued by other Divisions for completion.
- Currently overseeing **28** construction projects totaling **\$97,886,516.20**.



EPW provides over night Crews and supervision support



LAND DEVELOPMENT

- Processes permit applications and reviews construction plans and plats for residential and commercial subdivisions, drainage facilities, and other construction within County rights-of-way.
- Reviews and prepares recommendations for approval on all re-zoning and site plan applications.
- Ensures developments conform to the County's Unified Land Development Code (ULDC).
- Processes, reviews, and comments on all subdivision variance applications.
- Processes all abandonment requests for plats, roads and easements.
- Processes, reviews, and approves acceptable base building line waivers and easement encroachments.
- Provides reviews for proposed revisions to the County's ULDC and Comprehensive Plan.



Development platted by Land Development



LAND DEVELOPMENT

A Right-of-Way Permit is required to construct or work within County maintained rights-of-way.

Right-of-Way Permitting Ordinance 2019-030 gives the County Engineer the authority to permit various activities, construction and encroachment within County maintained rights-of-way.

Land Development processes three types of Right-of-Way permits:

- Construction in the right-of-way (RW) permits
- Utility (UT) permits
- Landscaping (LA) permits

In recent years, the State Legislature has passed legislation related to utility permit processing timeframes.

- UT permits shall be approved or denied within **60 days of submittal**.
- Denial letters shall include reasons for denial.
- The applicant shall resubmit to address reasons of **denial within 30 days** of receiving the denial letter or the application gets cancelled.
- The County has **30 days to review** the resubmittal to determine if the applicant addressed comments.
- If the County fails to review the resubmittal within **30 days**, the application is automatically approved.

Approved
Permits

1,221

in 2022



LAND DEVELOPMENT



- EPW Received Naco Award for fully electronic permitting review (paperless process!)
- Processes mostly paperless platting review.
- Historically, Commissioners have been contacted about the length of time to process and approve a plat in Palm Beach County.



- This is one way Palm Beach County ensures to potential land owners that a lot has been properly vetted for development and has all the minimum requirements to be built upon.

Many counties in Florida make this a political process; however, in 1995, Palm Beach County Commissioners decided this was administrative in nature and should be processed and approved at the staff level. That action saved months off the approval process and staff now brings back a semi-annual report of off the plats administratively approved.



ROAD & BRIDGE

- Maintains all County-owned roads and bridges
 - 3,500 lane miles of paved roads
 - 40 miles of shell rock roads
 - 10 miles of asphalt milling roads
 - 291 fixed bridge structures
 - 8 bascule bridges and 1 swing bridge
- Maintains bridges, pathways, storm drainage systems, sidewalks, drainage ditches, guardrails, and retention/detention ponds.
- The Division develops and manages a road resurfacing program, maintains and operates nine movable bridges, oversees the inspection process for all County owned bridges, and operates the north and south inlet sand transfer pumping stations.



Under bridge bucket truck for bridge maintenance



Menzi Truck for ditch cleaning



Heavy-Duty Vector Truck for sewer cleaning



ROAD & BRIDGE

Road and Bridge Construction Section

Coordinate / Supervise Construction Projects

Typical Scopes:

- Estimate / Evaluate project scopes and County infrastructure for projected maintenance
- Coordinate PBC contractual resurfacing, pathway, ADA, drainage, and intersection projects for adherence to contracts, plans and specifications

Bridge Section

Inspection / Preventative Maintenance / Operations

Typical Scopes:

- 300+ fixed structures / 8 Bascule Bridges / 1 Swing Bridge
- Maintenance involving electrical, mechanical, and structural
- Manage / Supervise Bascule bridge tender staffing / operations
- Guardrail maintenance / repair

Road Section

District Maintenance

Typical Scopes:

- Road / Pond / Right-of-Way Maintenance / Mowing / Limerock & Milling Roads Grading
- Pot hole patching / Edge / Slope mow / Small Ditch – Hand Crew
- Respond to Engineer Action Centers

*StormWater Infrastructure **Maintenance Operations***

Typical Scopes:

- Inspection (CCTV / Pipe Rover)
- Aquatic Spraying
- Pathway Sweeping
- Street Sweeping
- Ditch / Canal cleaning (Menzi)
- Vactor Operations (Removal of obstructions, sediment and debris contained in stormwater infrastructure)

IST Resurfacing

- 10 year plan - **over 130 projects (\$94.5m)**

Typical Project scopes:

- Milling and paving
- Restriping
- Updating curb cut ramps to latest ADA standards



ROAD & BRIDGE (Stormwater Section)

Section Goal

Operation and maintenance of County stormwater road conveyances, swales, ditches and supporting infrastructure.



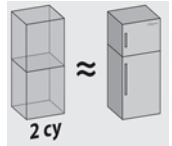
Equipment & Staff

- CCTV Van: Operated by MEO IV Operator & MEO II Assistant
- Pathway Sweepers: Operated by MEO II Operators
- Street Sweepers: Operated by MEO IV Operators
- Vactor Trucks: Operated by MEO III Operators & MEO II Assistants
- Menzi Muck: Operated by MEO IV Operators
- Storm-water Team leaders: PW Crew Chief and PW Supervisor
- There are currently (17) active storm-water positions and (27) pieces of equipment/vehicles.



Stormwater:

- 42,708 LF Culvert Cleaned
- 2,540 Stormdrain Structures Cleaned
- Removed 2,604 CYD's of Storm System Debris
- Equivalent to 1,302 Refrigerators



Dredge Group

Maintenance / Operations - (SLWI) South Lake Worth Inlet & (LWI) Lake Worth Inlet Sand Transfer Plants

Typical Scopes:

- Preventative Maintenance
- Operation – Operate dredge transferring sand from the north side of the inlet jetty's to the south side (Maintaining the natural flow of coastal sand interrupted by the inlets)
- Repair / Replace / Rebuild / Fabricate Components

IST Drainage

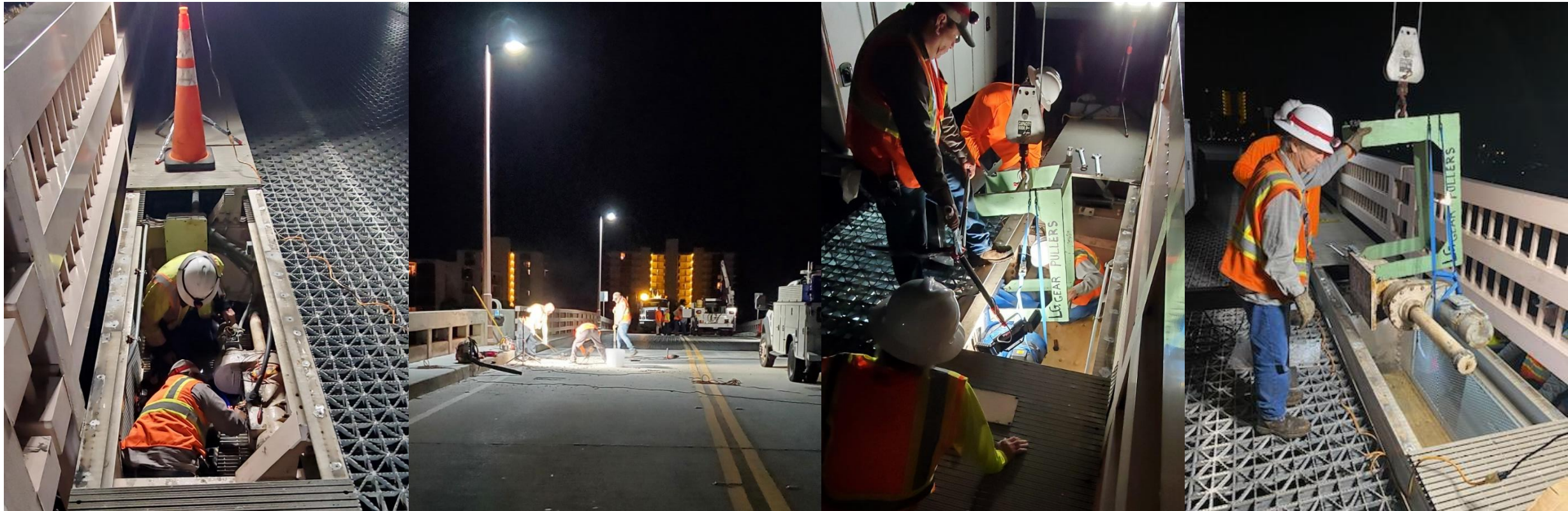
Stormwater Infrastructure Countywide Repairs

- 10 year plan – (Pipe Replacement - \$3m)
Typical Project scopes:
- Replace failing (CMP) Corrugated Metal Pipe
- Replace/Rehab catch basins and structures





ROAD & BRIDGE



CRC 707 Bascule Bridge – Lock Replacement and deck repairs

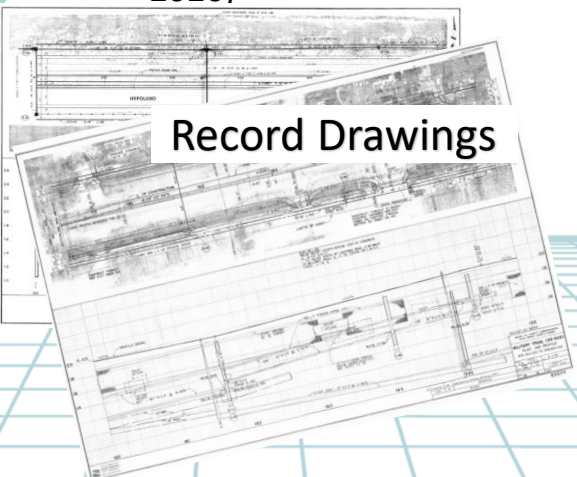
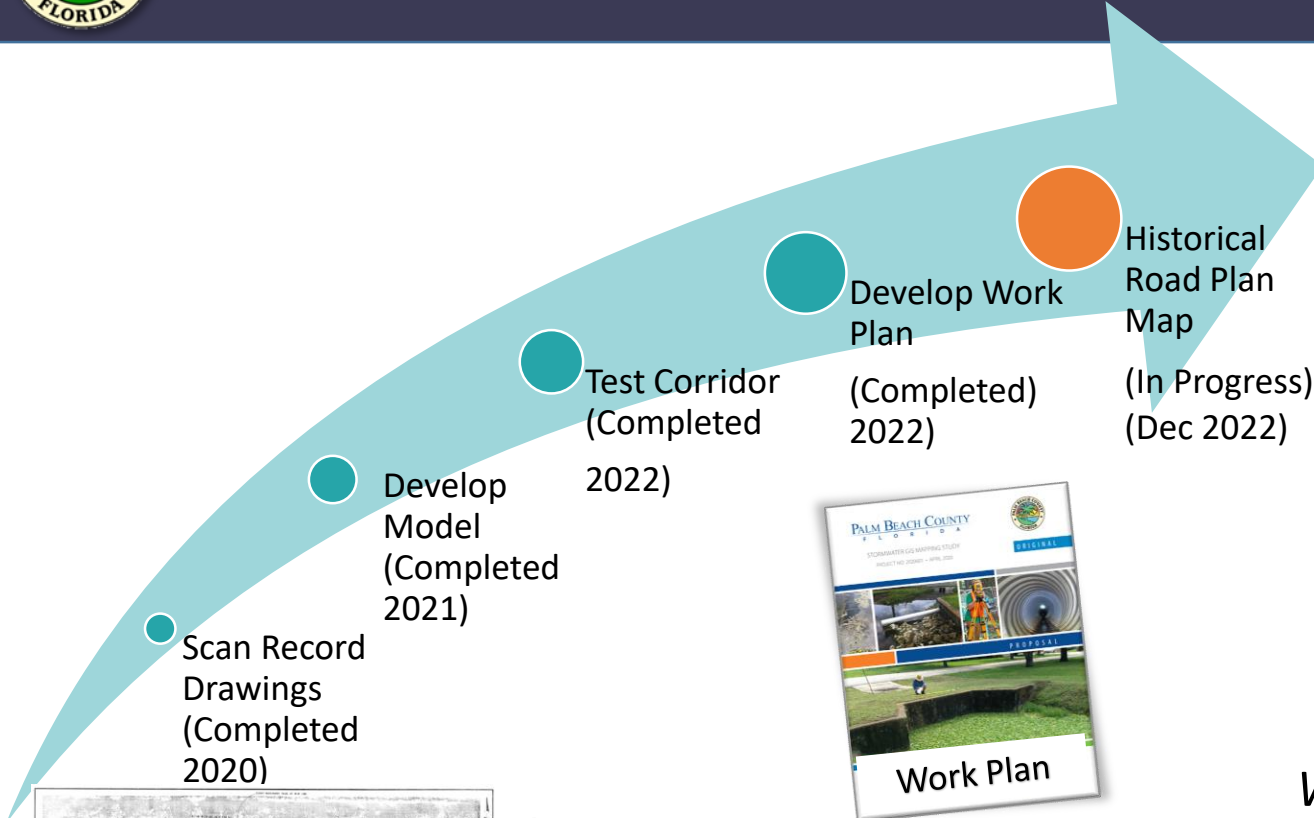
Lock replacement is an in-house rehab/maintenance of worn lock system.

This is something that needs to be addressed approximately every 20 years +/- based on traffic volume and wear.

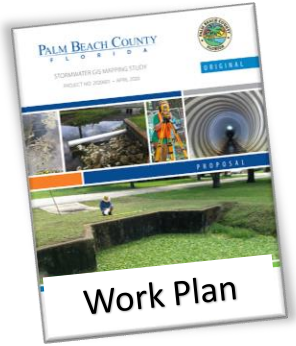
Old components are sent out for refurbishing and kept in house for emergency repairs or future rehab.



Stormwater Infrastructure Mapping

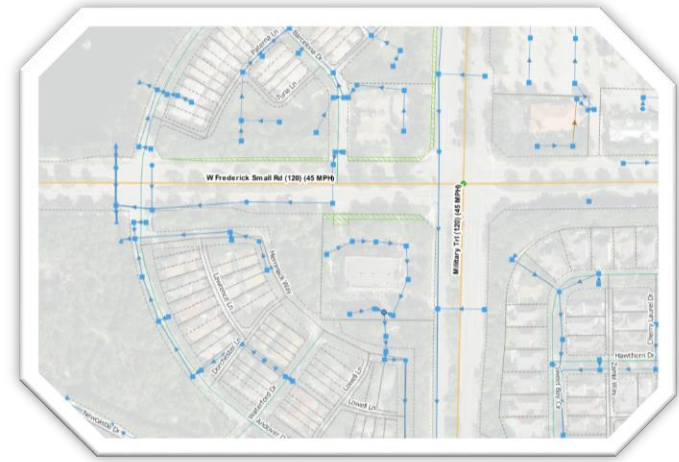


Record Drawings



Work Plan

Future Stormwater Mapping



We are integrating our maintenance work and GIS system by having crews create records while in the field and build our GIS layers.

Protecting our Natural Resources One Drain at a Time



Bascule Bridge CCTV

Camera system will assist with the safe operation of these bascule bridges by providing an additional tool to monitor site conditions (i.e. pedestrians, roadway vehicles, marine vessels and people under the bridges in the waterway)

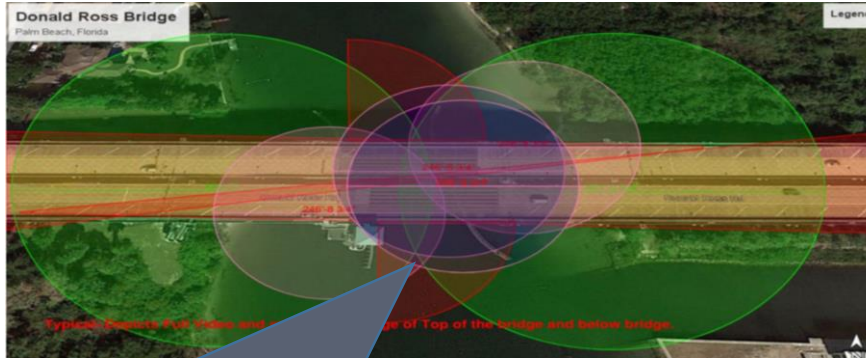
Camera Systems **\$2M Total**

Installation to begin at CR707

AKA - Cato's Bridge

Equipment Acquisition – In Progress

Installation / Setup – To be Scheduled



Shaded areas depict video and analytic coverage above and below bridge (Typical for all bridges)

- Identified areas will be monitored for the presence of anyone or anything - triggering an alert (audible / warning)

- Bridge Geometry
- Site conditions
- Trigger Alerts
- Intelligent Analytics programmable to learn and log objectives - such as vessel height

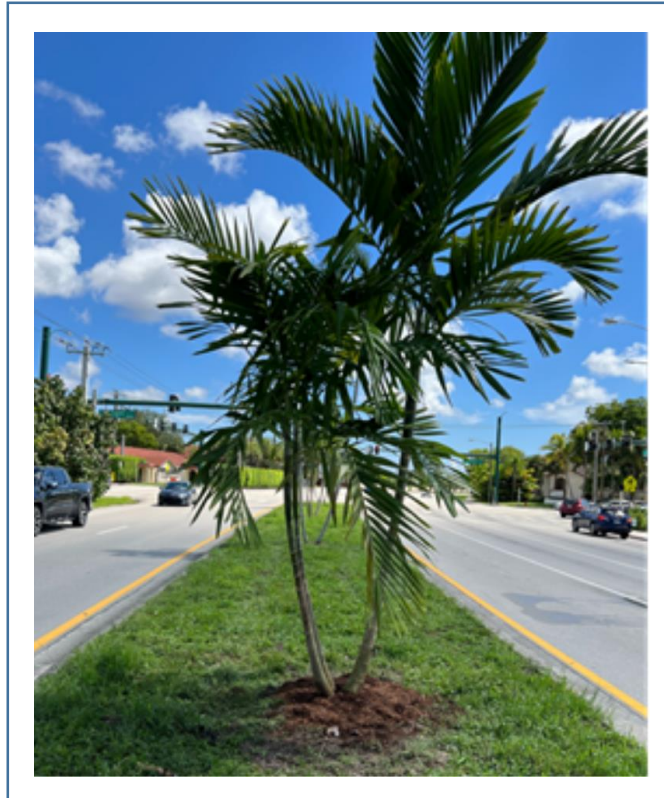


DINION inteoX 7100i IR





STREETSCAPE SECTION

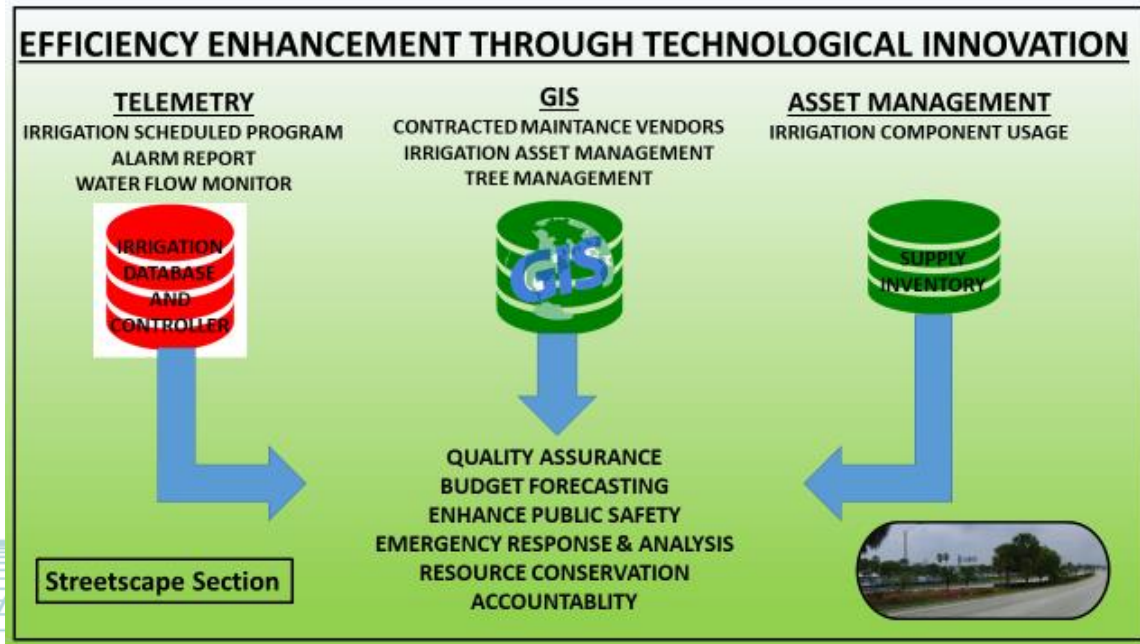


- Provides well-designed and sustainable beautification in the medians of **150 miles** of unincorporated thoroughfare roadways in order to supplement the urban forest and to enhance our environment.
- Through design, implementation and maintenance of appropriate and aesthetically pleasing enhancement projects, the driving experience is enhanced for those traveling the beautified roads.
- Streetscape's beautification projects have environmental benefits sequestering over **100 tons of carbon per year** and providing a net cooling effect of 85,000 room-sized air conditioners operating at 20 hours per day.



STREETSCAPE SECTION

- Streetscape also controls and monitors irrigation systems using remote sensing technology that maximizes the system's efficiency and conserves water.





SURVEY

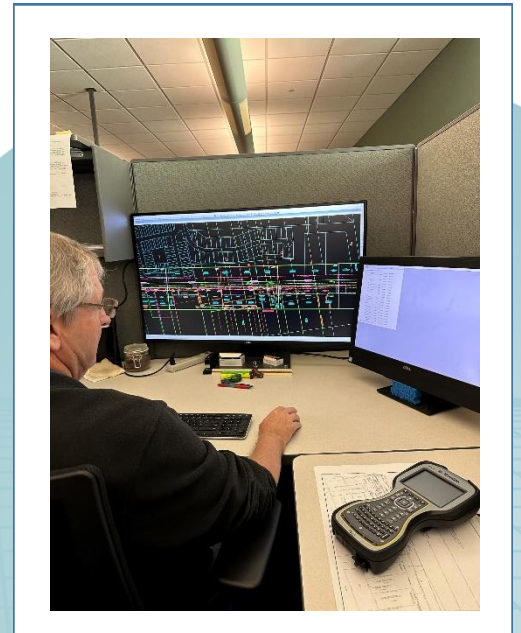


In order to address the needs of the Department as well as the County and ensure that the control network is continuously maintained, in 2022 County Administration agreed to create a brand new division within the Department; led by the newly created County Surveyor position.

- This Division provides a full range of surveying services for parks, roadway design, county airports, environmental resource management, FEMA, county real estate acquisitions, Palm Beach County Sheriff's office and infrastructure projects throughout Palm Beach County.

- Maintains and coordinates a county wide network of horizontal and vertical control monuments that is utilized by both the public and private sector for projects throughout Palm Beach County.

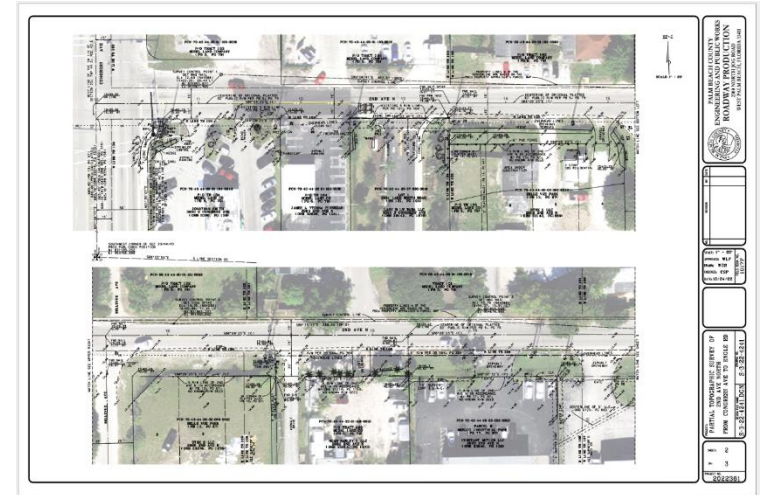
- This control network helps surveyors maintain consistency along historical boundary lines and for future design considerations and is one of the largest networks in the State of Florida.



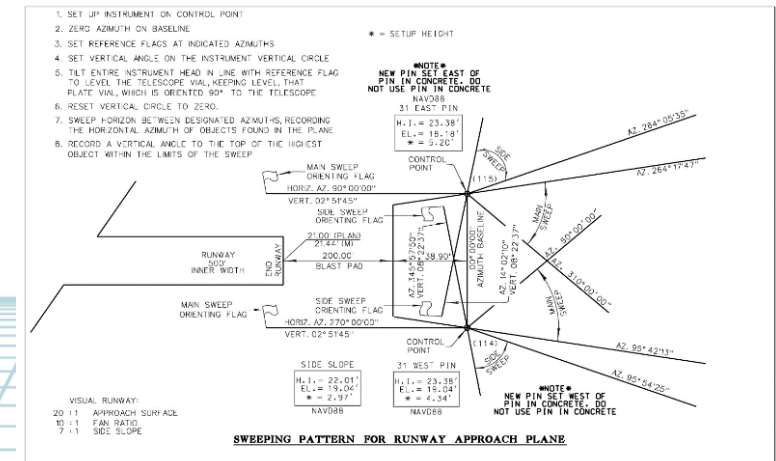


SURVEY

- Reviews subdivision plats, boundary surveys, legal descriptions, easements, lot combinations, minor subdivisions, right-of-way dedications, abandonments and development reviews for new projects to ensure they meet County and State compliancy code requirements.
- Staff works with Planning and Zoning to map approved Development Review Surveys for new project applications into the GIS database for design considerations throughout the county.
- Staff works with Planning and Zoning to map approved Development Review Surveys for new project applications into the GIS database for design considerations throughout the County.



Road Survey for GIS database



PBI Airport Survey



ROADWAY PRODUCTION



- Administers, coordinates, schedules, and monitors the design, right-of-way acquisition, preparation of contract documents, bidding, and construction of the County's Five Year Road Program.
- Manages the Municipal Service Taxing Unit (MSTU) Program which provides paving and drainage improvements throughout Palm Beach County.
- Administers the Consultant Competitive Negotiations Act (CCNA) Program.
- Coordinates bid and award of Annual Construction Contracts.
- Reviews subdivision plats, boundary surveys, legal descriptions and sketches, and Development Review Committee petitions to ensure compliance with all applicable codes and standards.



ROADWAY PRODUCTION

The Five Year Road Program was established by Ordinance 85-40 to set forth the road projects to be funded, designed, and constructed by the County over the next five year period.

Funding sources include impact fees, proportionate share, gas taxes, infrastructure sales tax, FDOT and miscellaneous agreements

Each year, staff reviews network's traffic capacity and makes recommendations to the Commissioners for construction improvements over the next five years. The plan is updated twice a year.

➤ **Types of contracts ROADWAY PRODUCTION oversees:**

- ANNUAL AND CONTINUING SERVICE CONTRACTS – Typically a 3 year term
- DESIGN ANNUAL CONTRACTS AND CONSTRUCTION ANNUAL CONTRACTS

The two types of annual contracts are **design contracts** which are consultants selected through the CCNA process, and **construction contracts** which are competitively bid.



ROADWAY PRODUCTION

CONTRACTS SECTION

- This section administers, coordinates, selects/bids and monitors annual design and construction contracts.
- Prepares contract documents for design and construction projects.
- Coordinates and monitors grant funding.
- Prepares contract documents for projects that receive Federal funding for road construction projects.

THOROUGHFARE ROADS SECTION

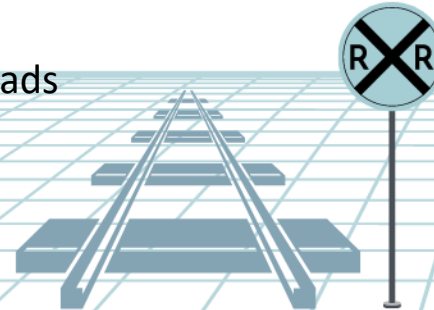
- Negotiates consultant contracts and manages consultant designed projects. Reviews and oversees the preparation of design plans, structural plans, right-of-way maps, permits, specifications and contract documents for thoroughfare roads.
- Manages the production of roadway alignment studies, bridge studies and drainage studies, and works with other County divisions, FDOT and municipalities to coordinate work on and adjacent to thoroughfare roads.
- Reviews plans for new developments in order to determine financial responsibilities of developments that impact thoroughfare roads.
- Provides estimated costs and identifies projects for inclusion in the Five-Year Road Program.



ROADWAY PRODUCTION

LOCAL ROADS SECTION

- Prepares and reviews design documents for roadway widening projects, intersection projects, drainage design projects and studies on local roads, alignment and right-of-way studies on local roads, bridge widening and replacement projects on the Intracoastal waterway and local roads.
- Manages the (MSTU) Municipal Service Taxing Unit Assessment Program which provides Paving & Drainage Improvements throughout Unincorporated Palm Beach County. **Program is Non-Active while the Ordinance is being Revised**
- Coordinates with all railroad entities located in Palm Beach County. This includes crossing agreements for any County road through railroad right-of-way and processing maintenance for those crossings associated with County roads and facilities.
- Prepares Cost and Feasibility Studies for potential sidewalks throughout the County as requested by the Traffic Division. Is responsible for the design of any sidewalks that are funded as requested by the Traffic Division. Will also provide design for the occasional multi-use pathway project.
- Prepares grant applications for local roads projects as well as their design should the applications be approved.
- Reviews all utility and right-of-way permits that are located on local roads





ROADWAY PRODUCTION

RIGHT-OF-WAY ACQUISITION SECTION

- Is responsible for acquisition of rights-of-way and easements for all road projects constructed by Palm Beach County.
- Maintains an inventory of County owned rights-of-ways, easements, County owned and "courtesy" maintained roads.
- Provides input into the abandonment of platted rights-of-way.
- Researches and provides information on plats, deeds, parcels, property ownership, and related information for County projects.

SPECIAL PROJECTS SECTION

- Prepares and reviews plans, specifications, right of way maps, permit applications and contract documents for thoroughfare roadway improvement projects.
- Reviews, coordinates and monitors thoroughfare roadway improvements that are proposed by developers and others. Prepares alignment studies, bridge replacement studies and drainage studies. Investigates atypical roadway and bridge maintenance issues to determine if design revisions are warranted and feasible.
- Performs plat and abandonment reviews. Performs thoroughfare roadway e-Permit reviews. Provides utility coordination for all thoroughfare and local road projects.
- Responsible for preparing utility relocation agreements for utilities that conflict with the construction of County owned roads.
- Reviews and approves proportionate share cost Estimates. Proportionate share cost Estimate Guidelines. Listing of established Proportionate share cost Estimates.



ROADWAY PRODUCTION

Construction Contracts Awarded within the past 12 - 18 months

Project name	Limits	Description	Award Amount
6th Ave. S.	over Lake Osborne Dr.	Bridge Replacement	\$11,074,000.00
Benoist Farms Rd	SR 80 to Belvedere Rd	0.9 mi, 3L	\$6,943,242.07
Clint Moore Rd.	Military Tr.	Intersection Improvements	\$339,217.00
Donald Ross Rd.	Bascule Bridge	Equipment	\$5,719,660.00
Ellison Wilson Rd.	Universe Blvd.	Intersection Improvements (NBR)	\$230,186.00
Flavor Pict Rd.	SR 7 to Lyons Rd.	1.0 mi, 2 L	\$3,408,627.25
Florida Mango Rd.	Edgewater Drive to S. of Barbados Rd.	0.6 mi, 3 L (L.W.D.D. L-8 Canal Bridge Replacement)	\$2,944,204.48
Lantana Rd.	Congress Ave.	Intersection Improvements (2EBL)	\$514,885.25
Lyons Rd./Sansbury's Way	Forest Hill Blvd. to Okeechobee Blvd.	Buffered Bike Lanes	\$5,862,084.91
Northlake Blvd.	Military Tr.	Intersection Improvements	\$303,000.00
Seminole Pratt Whitney Rd.	Orange Blvd. to S. of Northlake Blvd.	1.8 mi, 4/6 L	\$17,999,999.00
Seminole Pratt Whitney Rd.	Northlake Blvd.	Intersection Improvements	
State Road 7	Weisman Way	Intersection Improvements	\$1,378,374.35



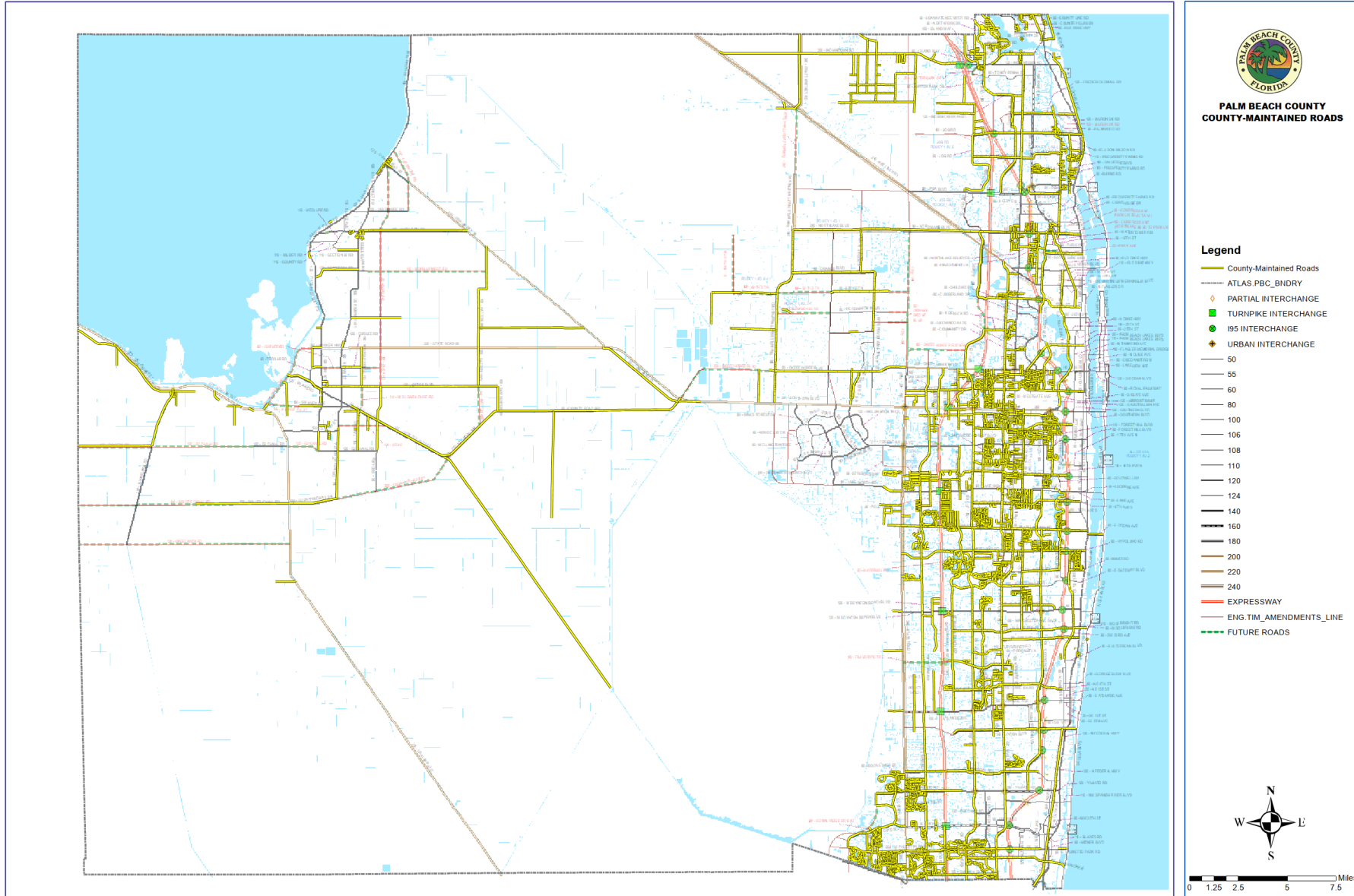
ROADWAY PRODUCTION

Anticipated Roadway Construction Bids in the next 12 months

Project Name	Project Limits	Description	Construction Estimate
45th St	E. of Haverhill Rd. to E. of Military Trail	0.6 mi, 6L	\$2,278,000.00
Australian Ave	Banyan Blvd to 45th Street	Drainage Improvements	\$30,000,000.00
Beach Road	N. of Old A1A	Parking Pavement Installation	\$900,000.00
Belvedere Rd	at SR 7	Intersection Improvements	\$400,000.00
Congress Ave	Northlake Blvd to Alt A1A (Phase A)	0.25 mi, 3L	\$1,800,000.00
Congress Ave	at Palm Beach Lakes Blvd	Intersection Improvements	\$5,350,000.00
Del Prado Circle	at Palmetto Circle	Intersection and sidewalk improvements	\$860,000.00
Florida Mango Road	10th Avenue North to Edgewater Dr.	0.9 mi, 3L	\$9,100,000.00
Half Mile Rd	Brook Isles Ave. to Atlantic Ave.	Road realignment	\$3,120,000.00
Highview Road	Summit Rd. to Overlook Rd.	Drainage Improvements	\$6,998,935.00
Lake Ida Rd	at Hagen Ranch Rd	Intersection Improvements	\$950,000.00
Linton Blvd	at Old Dixie Hwy.	Intersection Improvements	\$300,000.00
Northlake Blvd	E. of Seminole Pratt Whitney Rd. to E. of Hall Blvd. & E. of Hall Blvd. to Coconut Blvd.	3.4 mi, 4/6L	\$25,500,000.00
Okeechobee Blvd	at Haverhill Rd	Intersection Improvements	\$846,000.00
Palmetto Park Rd	at SR 7	Intersection Improvements	\$170,000.00
Penn Park Neighborhood	Resurfacing	Resurfacing	\$455,000.00
SW 18th St	at SR 7	Intersection Improvements	\$110,000.00
SW 18th St	at Boca Rio Road	Intersection Improvements	\$1,833,000.00
Westgate Avenue	Wabasso Dr to Congress Ave	0.9mi, 3L and roundabout	\$7,200,000.00
Total Estimated Cost:			\$98,170,935.00



COUNTY-MAINTAINED ROADS





TRAFFIC

Traffic Division Sections:

- Traffic Signal & Streetlighting Design
- Traffic Signal Systems & ITS
- Traffic Studies and Safety
- Traffic Concurrency & Plan Review
- Traffic Operations



- Provides for the safe and efficient movement of traffic on roads under the jurisdiction of the County through professional traffic engineering.
- Applies best engineering practices for design, installation, and operation of traffic signals; provides active arterial traffic management, maintains traffic volume and crash data, street lighting, pavement markings and signing.
- Reviews design plans for compliance with the current County standards and specifications and provides engineering input to major road construction projects, land development, site planning, and transportation planning.

19% of the street lights are maintained in-house, 81% of the street lights are maintained through an FPL agreement, 768 traffic signals are the County's, 539 traffic signals are FDOT's.

County Maintained

1,307
Street Lights



11,574
Traffic Signals





TRAFFIC

Installation of Traffic Signals:

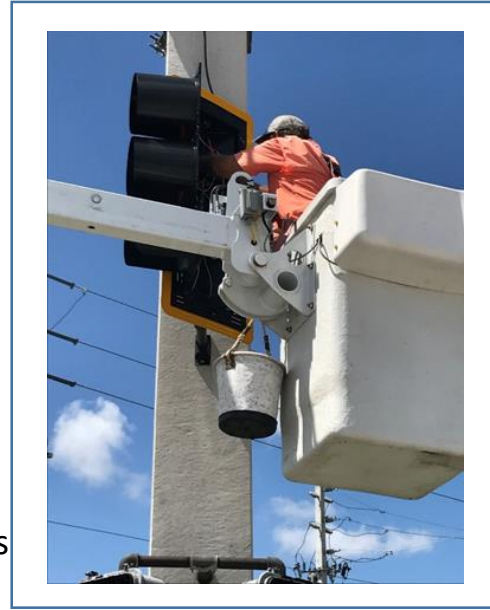
- Traffic signals are installed at intersections which meet certain criteria, depending on the characteristics and conditions of the intersection. These criteria are referred to as **“Signal Warrants”** and are published in the Manual on Uniform Traffic Control Devices (MUTCD), a federal document adopted by the state and implemented by the county. The signal warrants consider several factors such as the number of lanes, traffic volumes, accident history, speed limit, demographics, and character of the area. The MUTCD notes the research findings that traffic signals are less safe than 2-way stop and discourages the installation of signals, even if they meet the warrants, unless and after other mitigating traffic control measures fail to address the traffic concerns.

Operation and Maintenance of Traffic Signals:

- Palm Beach County operates and maintains all traffic signals, including those on the State Highway System and municipal roads except those in Boca Raton and the Town of Palm Beach. The county gets partially compensated by the FDOT for the cost of operating and maintain their signal system. **The county does not get any compensation from the municipalities for operating and maintaining their signal systems. State statutes give maintenance authority to the municipalities and most of the municipalities have in turn entered into interlocal agreements with the county to perform this work.**

Speed Limit Determination:

- State Statute 316.189(2) requires the county to follow guidelines established by the Department of Transportation in establishing speed limits. These guidelines are published in the Speeding Zone Manual. The manual generally requires the speed limit to be determined based on the 85th percentile speed from a 24-hour speed survey. These guidelines are based on that the 85th percentile speed represents the speed at which the overwhelming majority of the drivers find to be both safe and convenient given the conditions and character of the road. Posting an artificially lower speed limit often leads to high variety of speeds on the road which can cause more crashes.





TRAFFIC

Streetlights:

- The County's policy allows for streetlights to be installed on multi-lane major roads in the unincorporated areas. Streetlights on County roads within municipalities is the responsibility of the local government as they collect the electric franchise fee within their corporate limits. Revenues from the electric franchise fees are usually used to fund streetlights.

Installation of All-Way Stop Signs:

- The MUTCD provides guidelines for the installation of all-way stop signs. Generally, all-way stop is appropriate at intersections with medium to high traffic volumes that are almost equally distributed among all approaches or two conflicting approaches. Research shown that drivers on high-volume streets tend to run the stop sign at the intersection with much-lower-volume side streets resulting in severe crashes.

Palm Beach County Traffic Concurrency:

- The Traffic Division administers the implementation of the County Traffic Concurrency program. Traffic concurrency did not allow new developments causing any major roadways system failure from proceeding unless and until this failure is mitigated either by the State, County, or the developer themselves. Since the adoption of the Proportionate Share legislation in 2013, the County lost its powers to stop a development based on traffic failure as long as the developer is willing to pay their proportionate share of the needed road improvements. The legislature later absolved the developer from the responsibility to improve already failing infrastructure which they are impacting.



GRANT APPLICATIONS

2021-22 RESILIENCE FLORIDA GRANT PROGRAM

- AUSTRALIAN AVENUE DRAINAGE IMPROVEMENTS, RECEIVED \$13.4 MILLION

2022 US DOT BRIDGE INVESTMENT PROGRAM

- CR 880 OVER THE C-51 CANAL, REQUESTED \$5.1 MILLION
- PALM BEACH LAKES BLVD OVER THE FEC RAILROAD, REQUESTED \$12.5 MILLION
- PROSPERITY FARMS ROAD OVER THE C-17 CANAL, REQUESTED \$8.5 MILLION
- CR 880 AT SAM SENTER ROAD, REQUESTED \$8.1 MILLION

2021 AND 2022 US DOT RAISE GRANT

- PALM BEACH LAKES BLVD OVER THE FEC RAILROAD, REQUESTED \$11.7 MILLION

2022 US DOT MULTIMODAL PROJECT DISCRETIONARY GRANT (MPDG)

- “FARM TO MARKET ROAD”: CR 880 FROM MARTIN LUTHER KING JR BLVD TO SOUTH OF CR880 AT 20-MILE BEND, REQUESTED > \$100 MILLION

2022 FDOT CIGP GRANT

- FLAVOR PICT ROAD: LYONS RD TO HAGEN RANCH RD TO INCLUDE NEW BRIDGE OVER FLORIDA’S TURNPIKE, RECEIVED \$3.6 MILLION

2022 COMMUNITY DEVELOPMENT BLOCK GRANT (CDBG) PROGRAM

- PENN PARK NEIGHBORHOOD RESURFACING, RECEIVED \$455K

SAFE STREETS FOR ALL (SS4A) PROGRAM

- DEVELOPMENT OF A MASTER TRAFFIC SAFETY PLAN, RECEIVED \$639K

Legend

- Awarded
- Under Review
- Not Received



QUESTIONS?

COMMENTS?