

## CORE TEAM

# Monthly Jail Trends (as of January 31, 2024)

Source: Data maintained by Palm Beach County Sheriff's Office, Booking Information Retrieval System (BIRS). Data computations and visualization completed by the Research and Planning Unit. Note: Aggregate Table and visualizations provided to ISLG/CUNY February 12, 2024. These trend data are reported to all sites as part of the SJC Monthly Jail Trends report [updated to include Race & Ethnicity].

February 12, 2024  
10<sup>th</sup> Floor, Email Distribution  
Criminal Justice Commission

Research and Planning Team

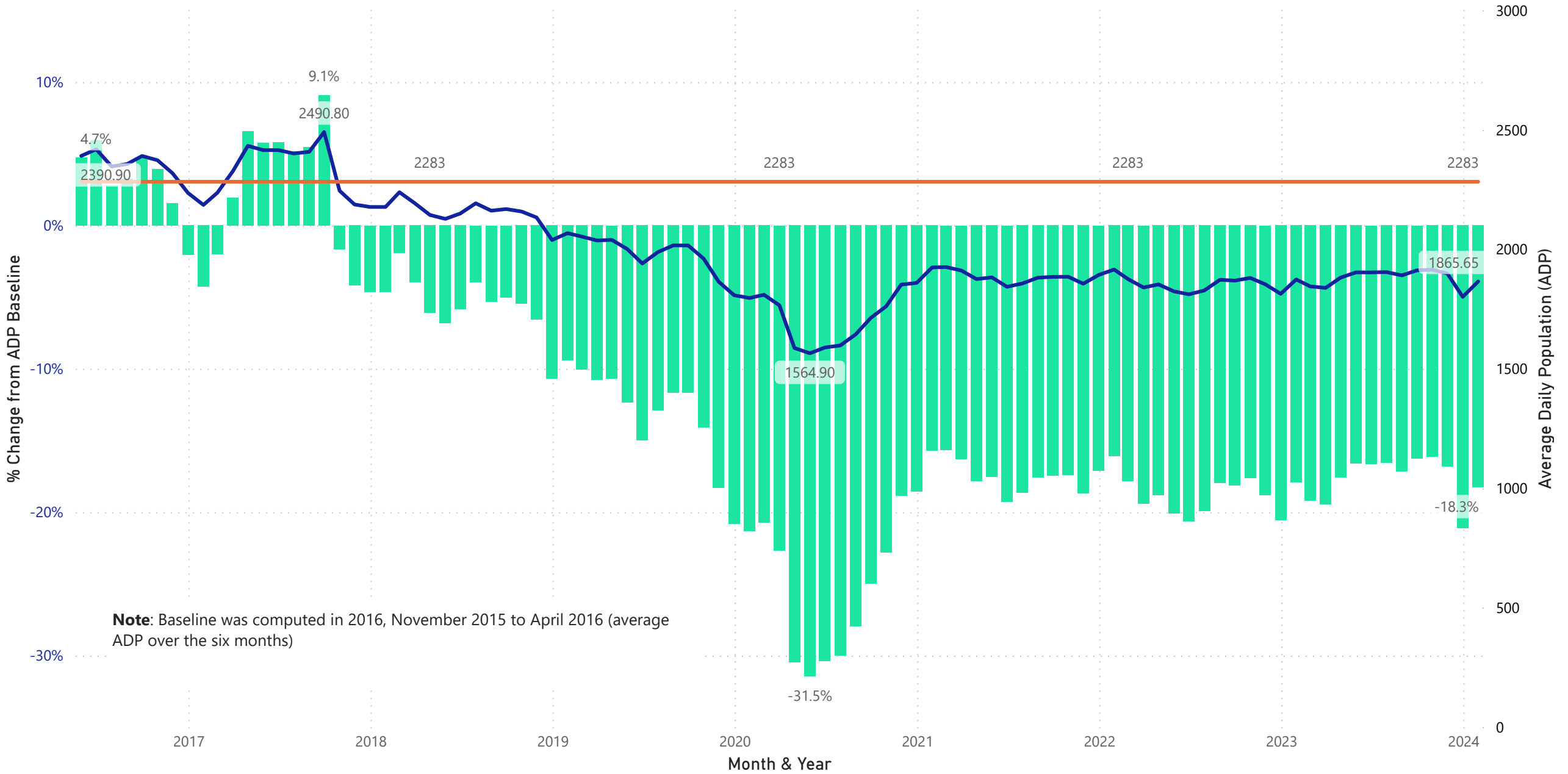


Supported by the John D. and Catherine T. MacArthur Foundation



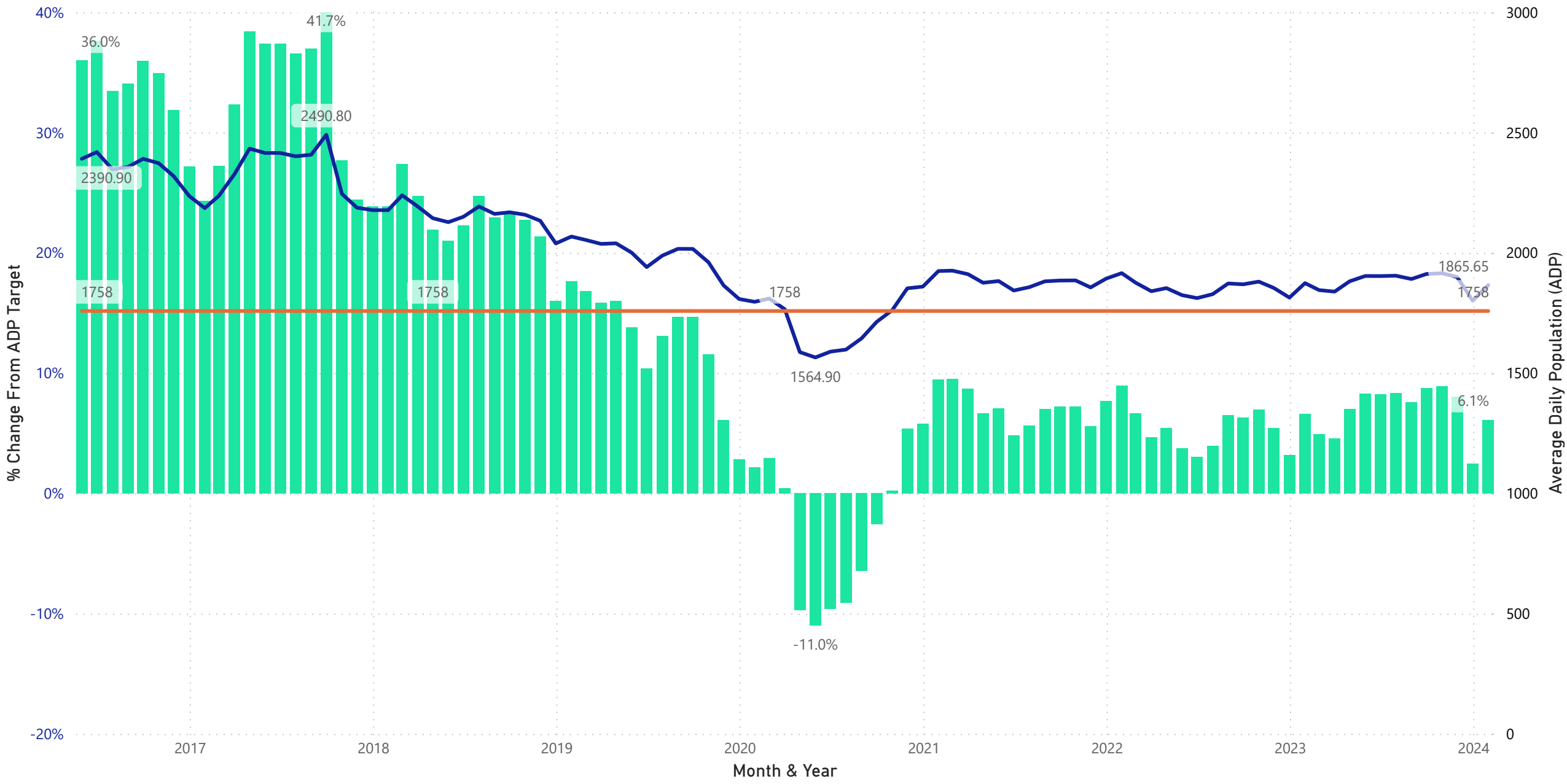
# Confined Average Daily Population (ADP) from Baseline

● % Change From ADP Baseline ● Average Daily Population (ADP) ● ADP Baseline (2283)



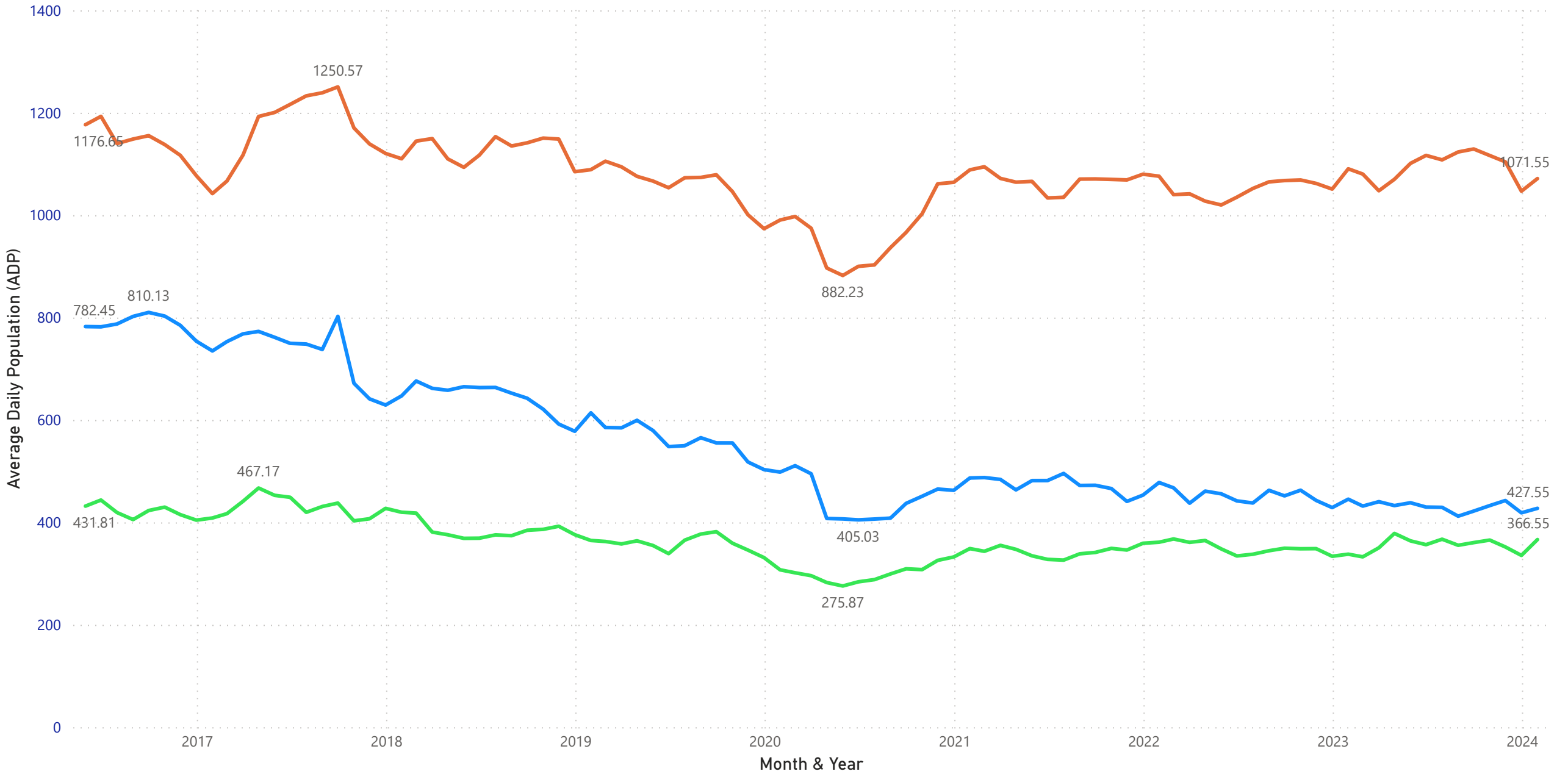
# Confined Average Daily Population (ADP) from Target

● % Change From ADP Target ● Average Daily Population (ADP) ● ADP Target (1758)



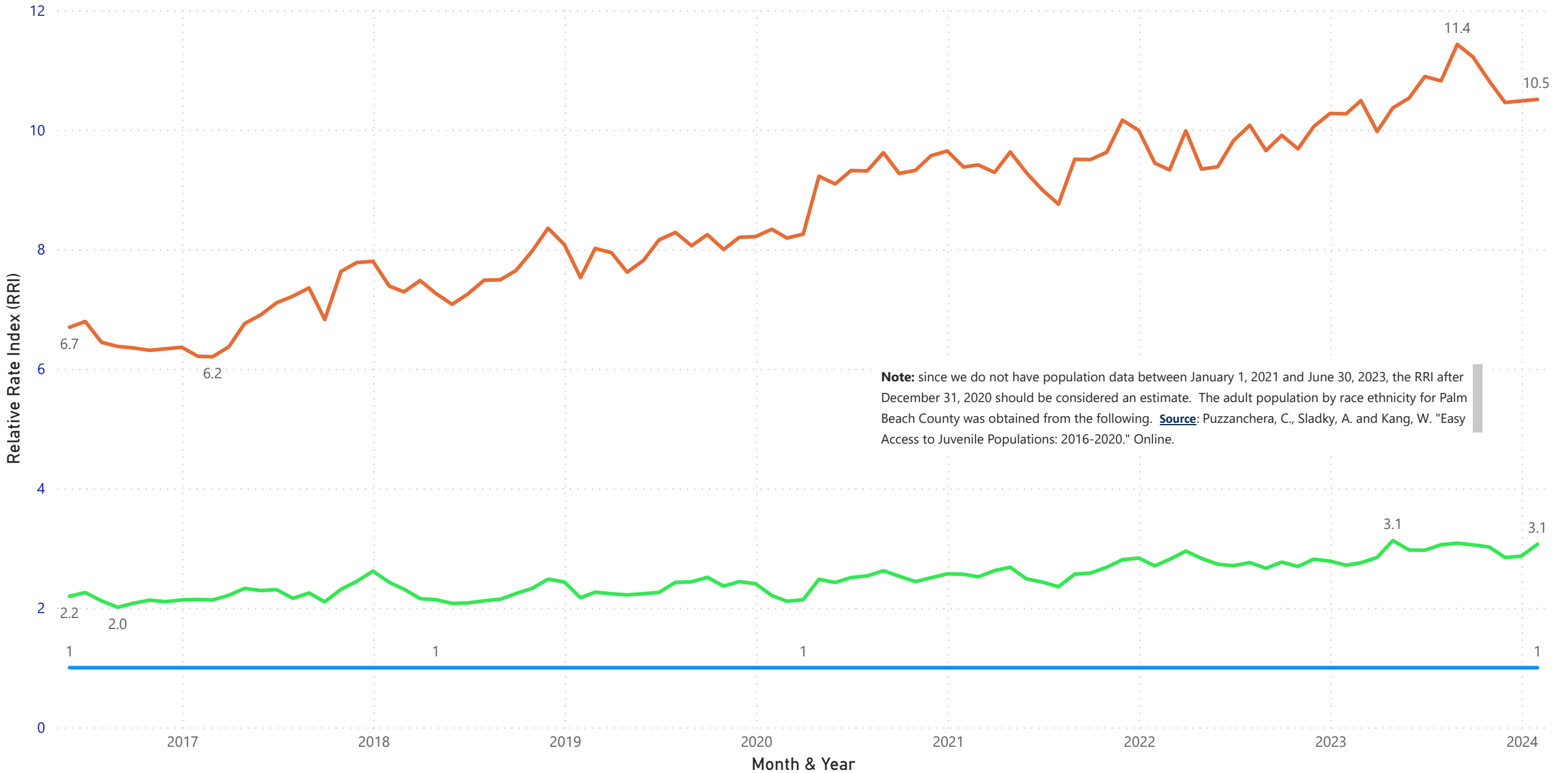
# Average Daily Population (ADP) by Race & Ethnicity

● Black ● White ● LatinX



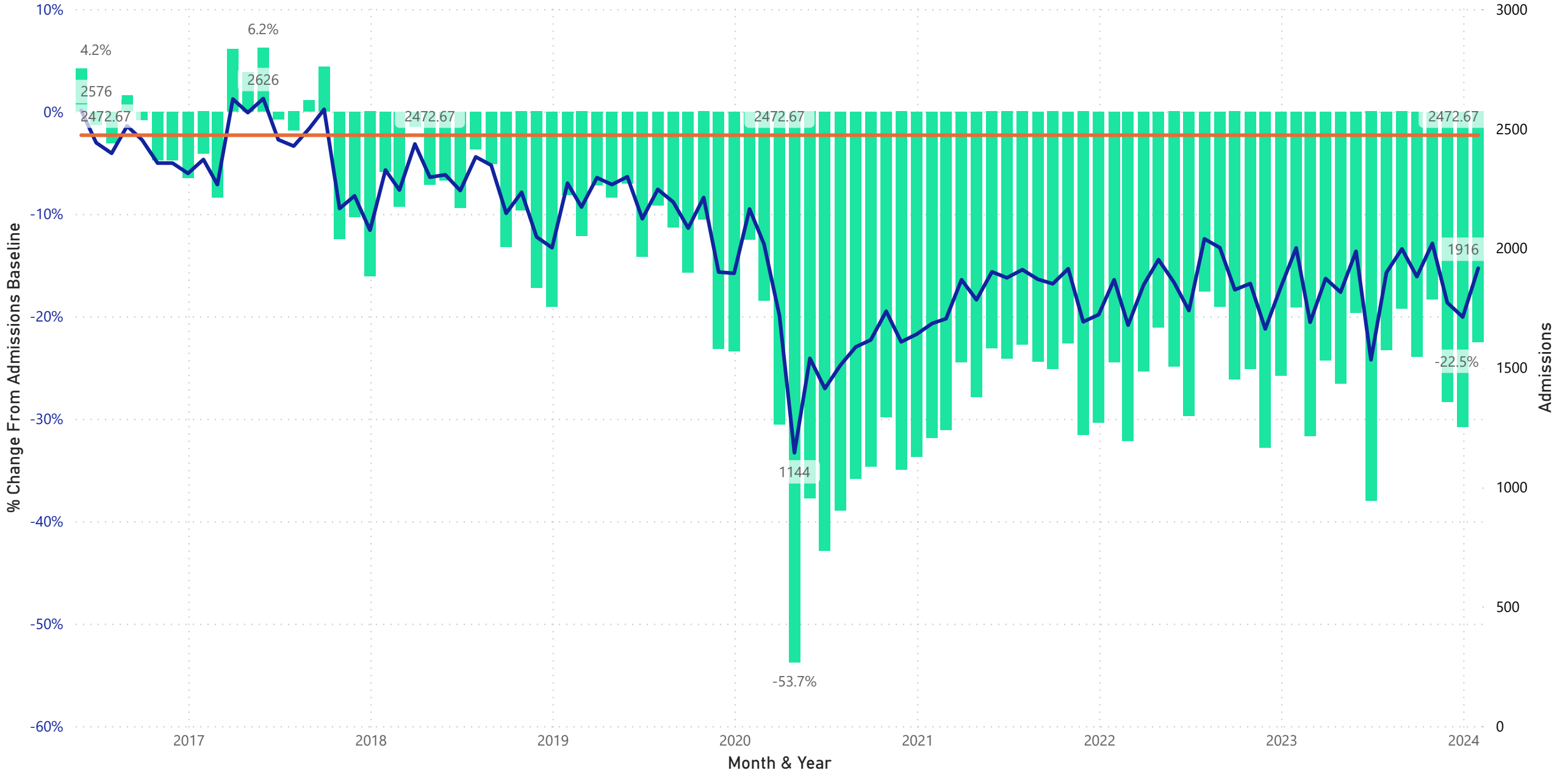
# Relative Rate Index (RRI) based on Average Daily Population (ADP) by Race & Ethnicity

● Black ● White ● LatinX



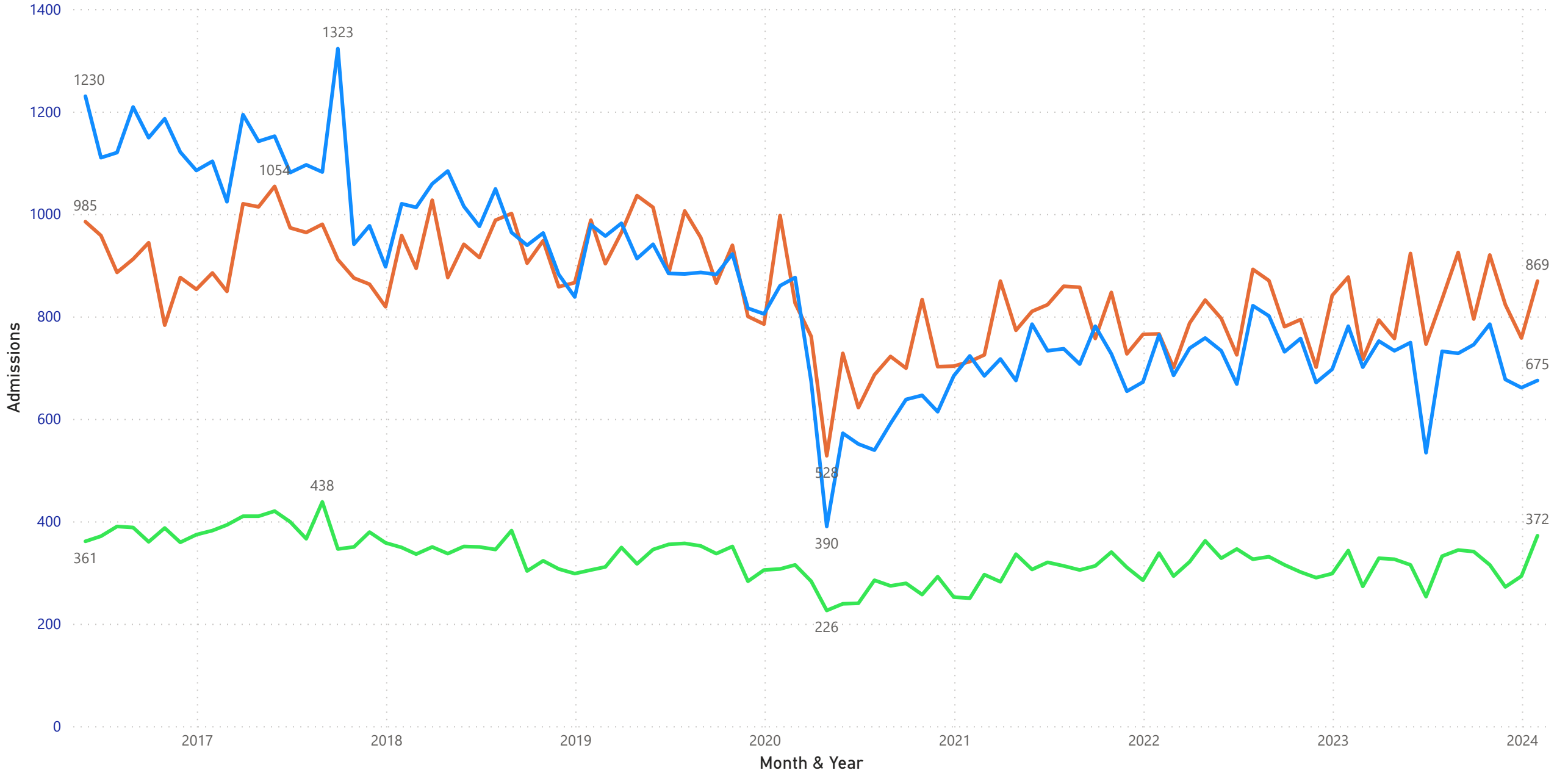
# Confined Admissions

● % Change From Admissions Baseline ● Admissions ● Admissions Baseline (2473)



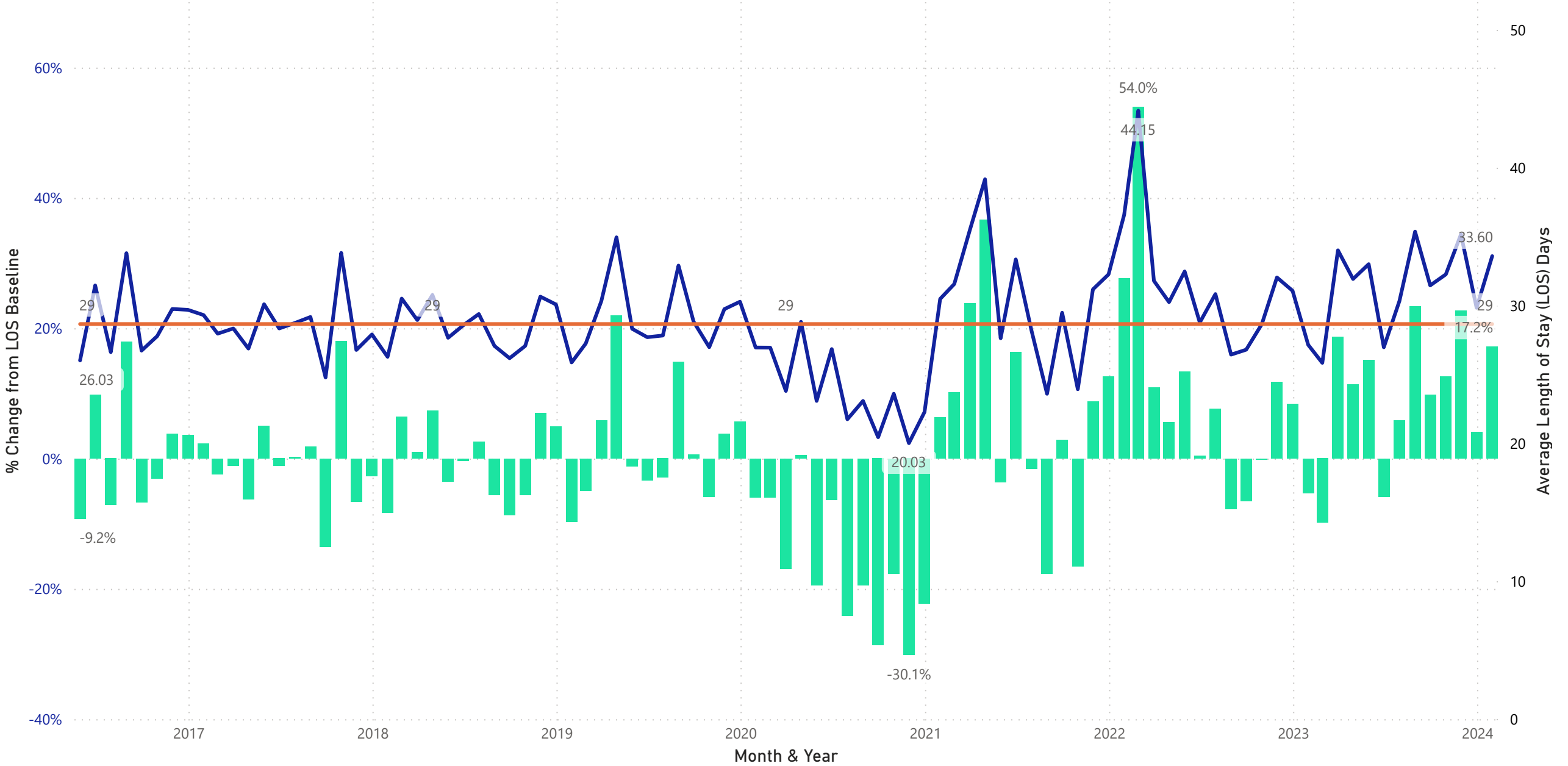
### Confined Admissions by Race & Ethnicity

● Black ● White ● LatinX



# Confined Average Length of Stay (LOS) Days

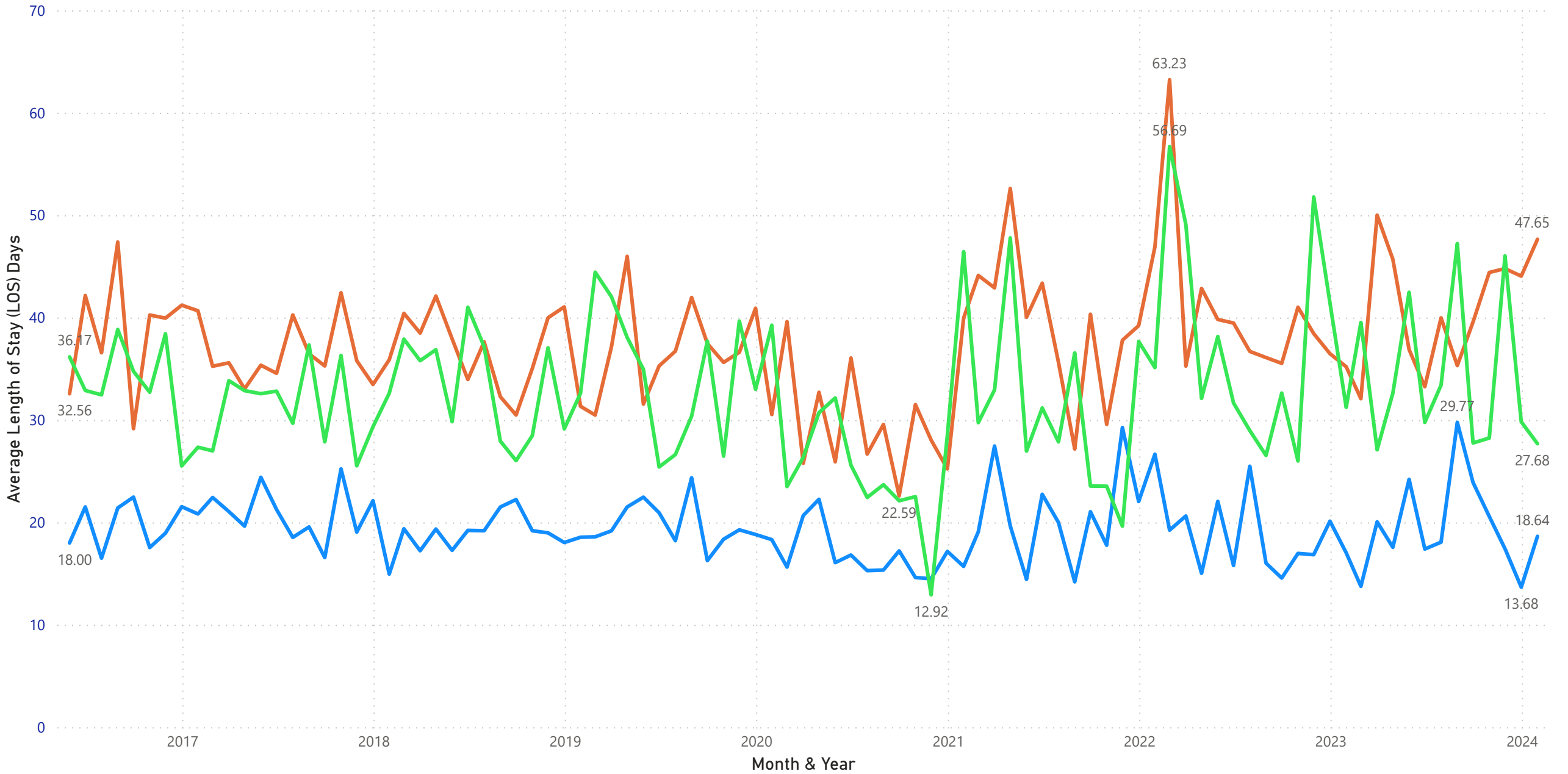
● % Change From LOS Baseline ● Average Length of Stay (LOS) ● LOS\_Baseline (28.67)





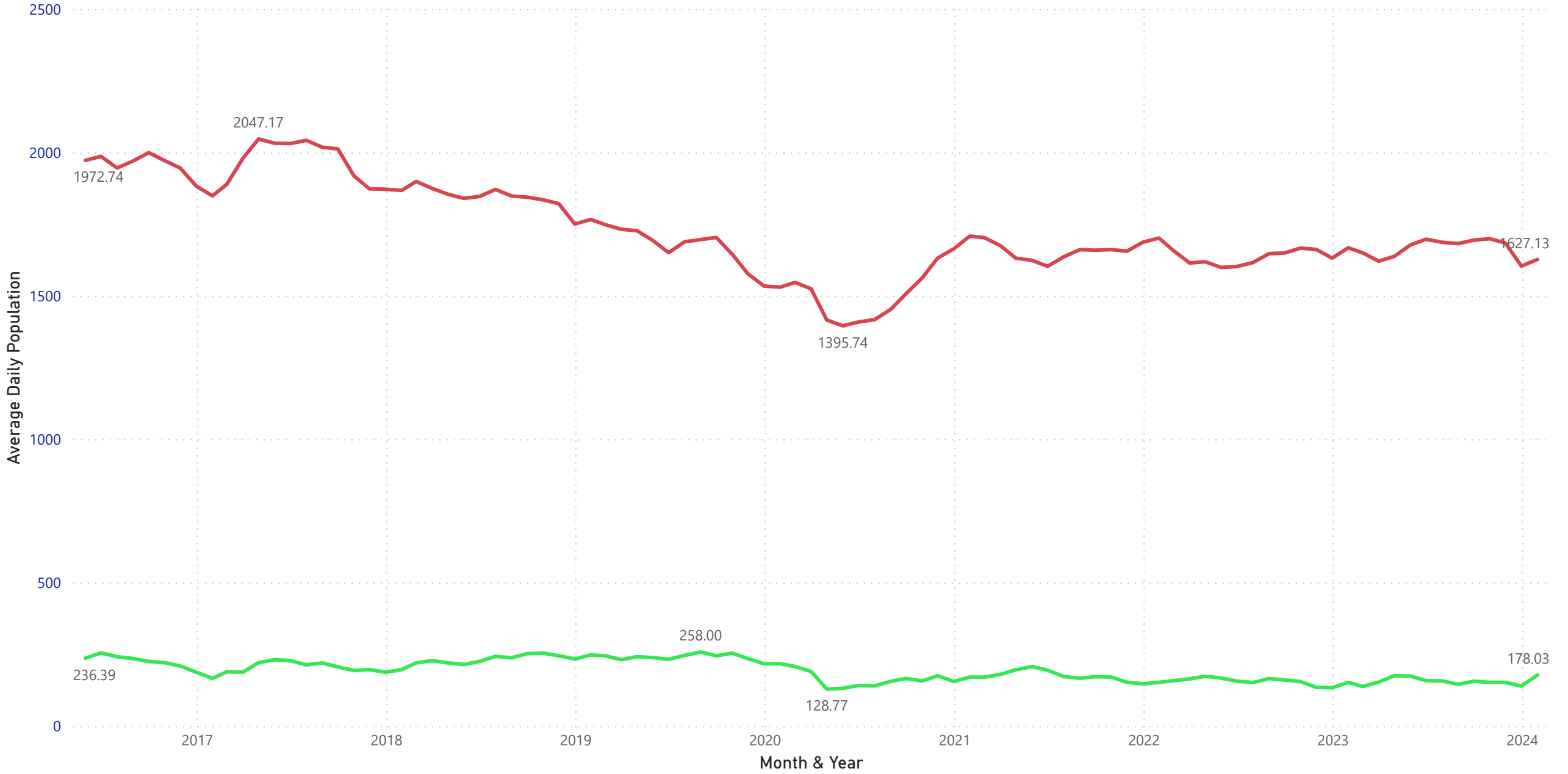
### Confined Average Length of Stay (LOS) by Race & Ethnicity

● Black ● White ● LatinX



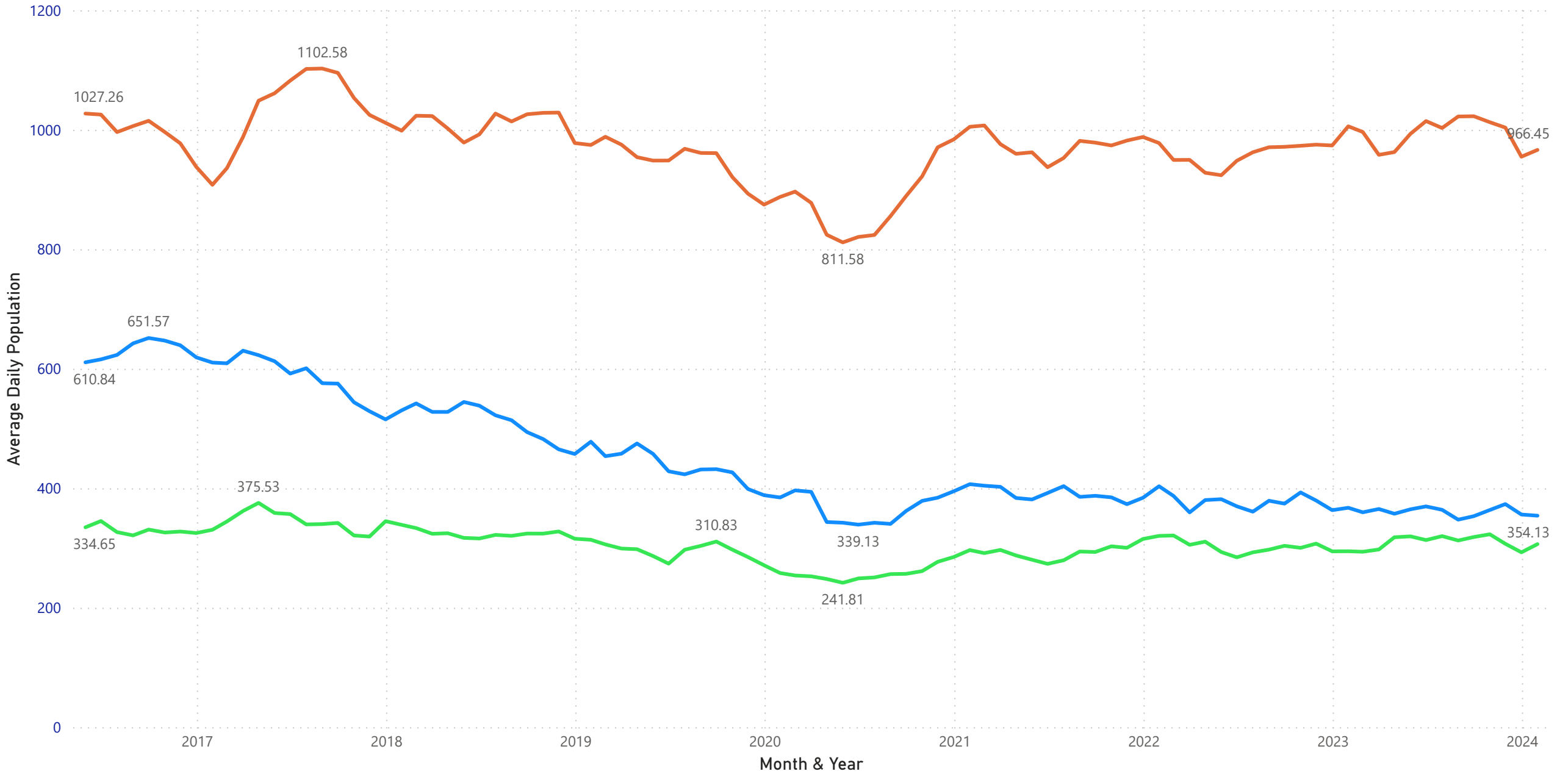
# Confined Average Daily Population (ADP) by Felony & Misdemeanor

Felony Misdemeanor



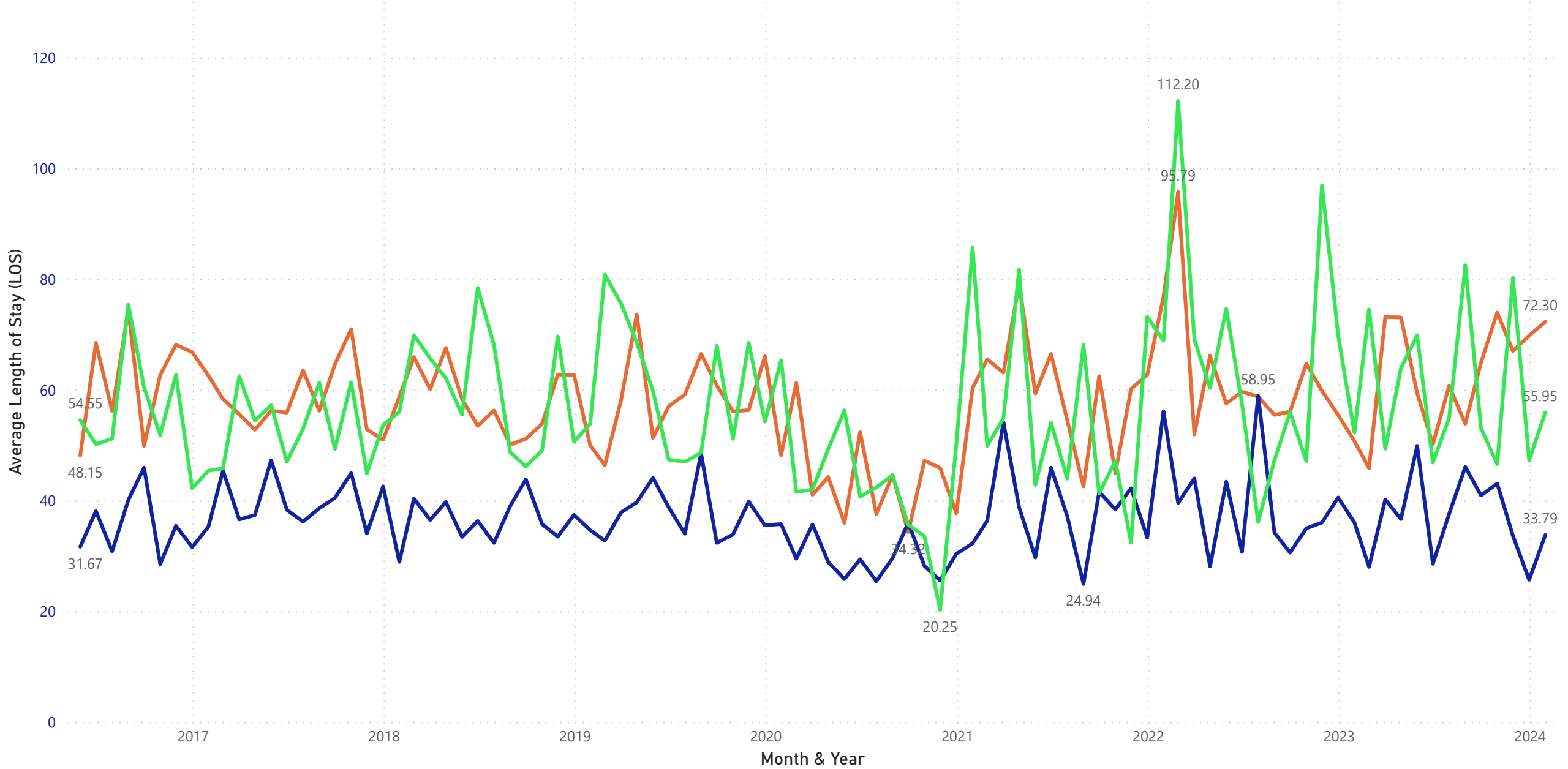
### Felony - Confined Average Daily Population (ADP) by Race & Ethnicity

● Black ● White ● LatinX



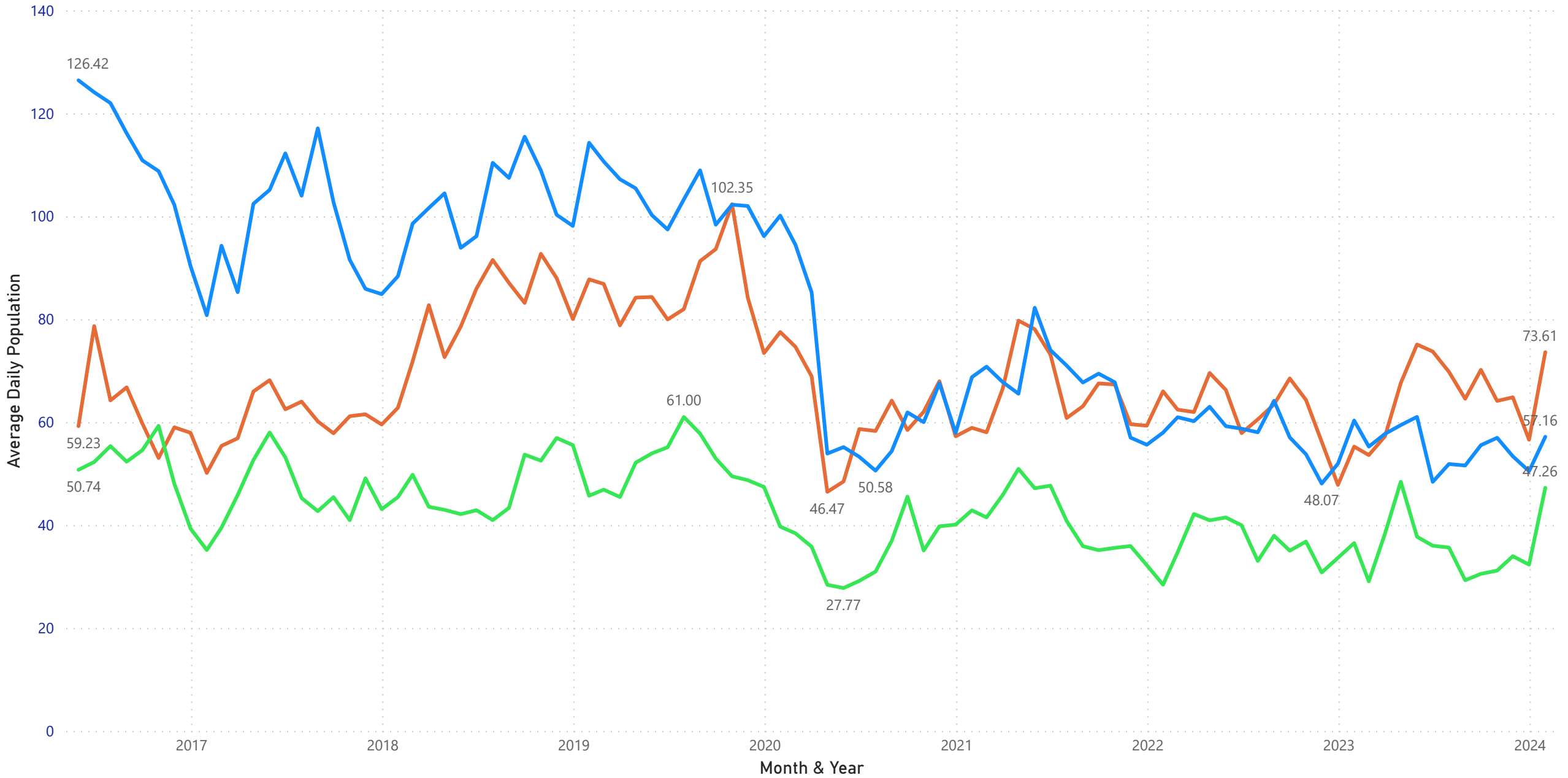
### Felony - Confined Average LOS by Race & Ethnicity

● Black ● White ● LatinX



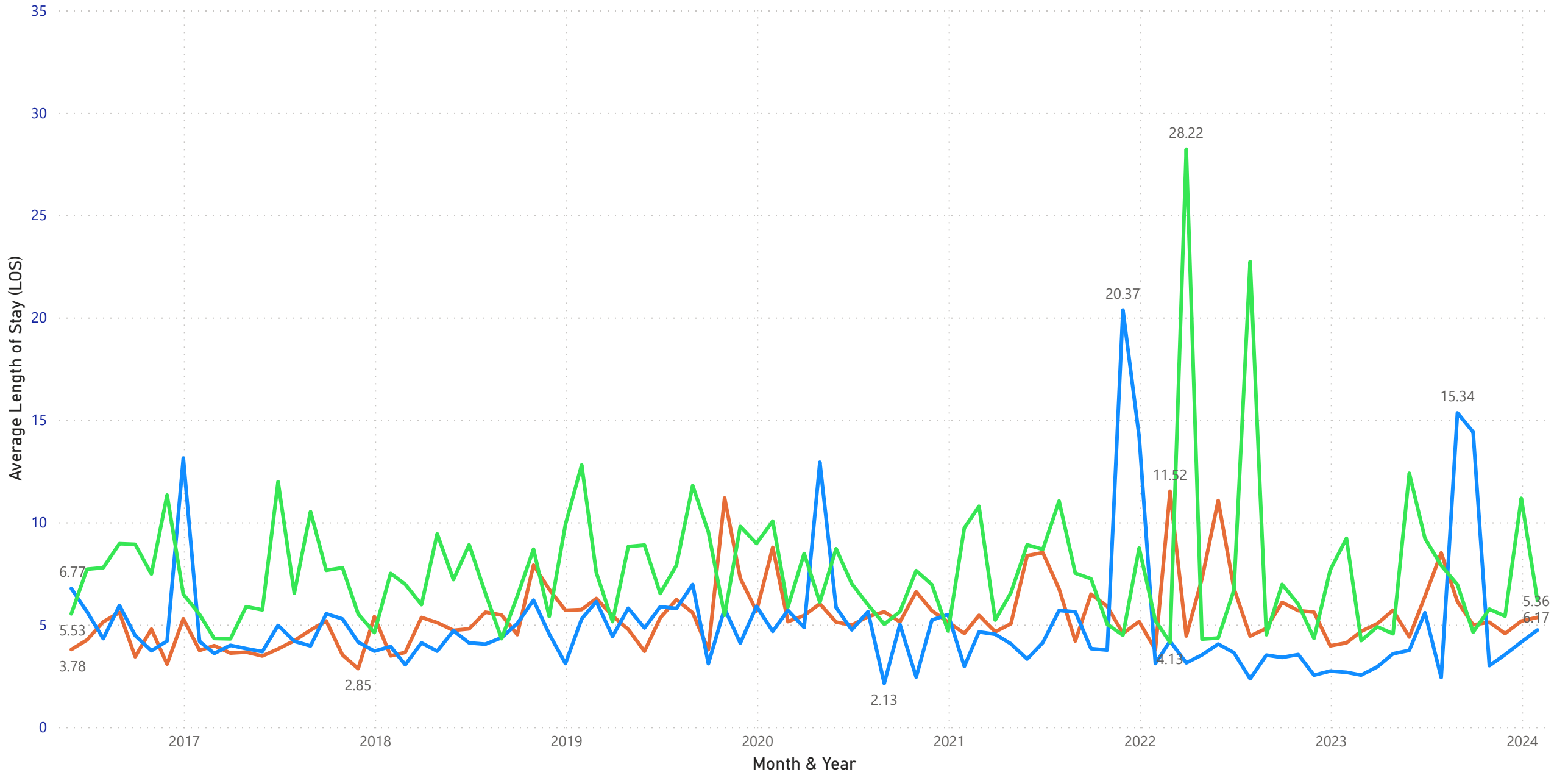
# Misdemeanor - Confined Average Daily Population (ADP) by Race & Ethnicity

● Black ● White ● LatinX



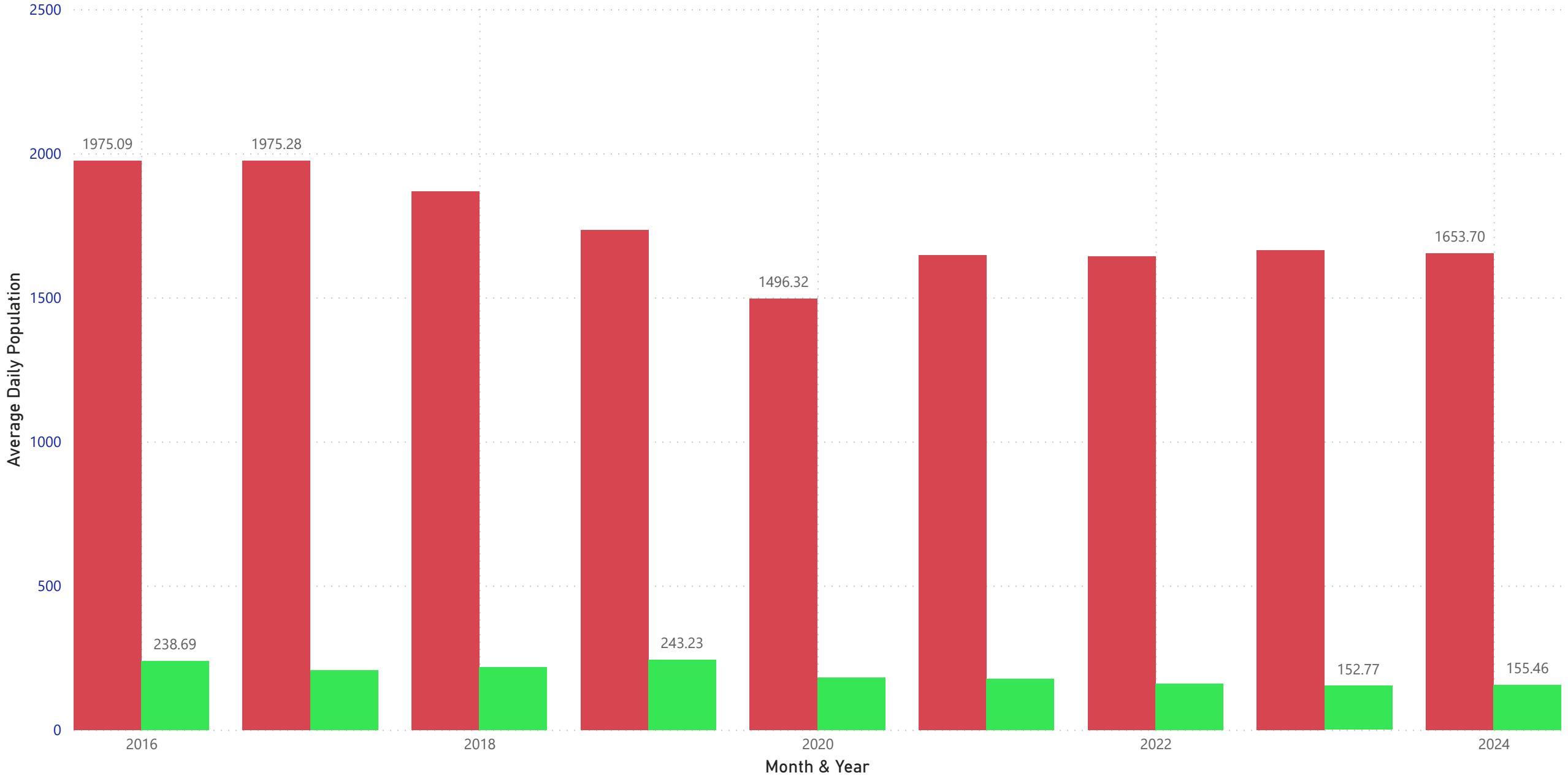
### Misdemeanor - Confined Average LOS by Race & Ethnicity

● Black ● White ● LatinX



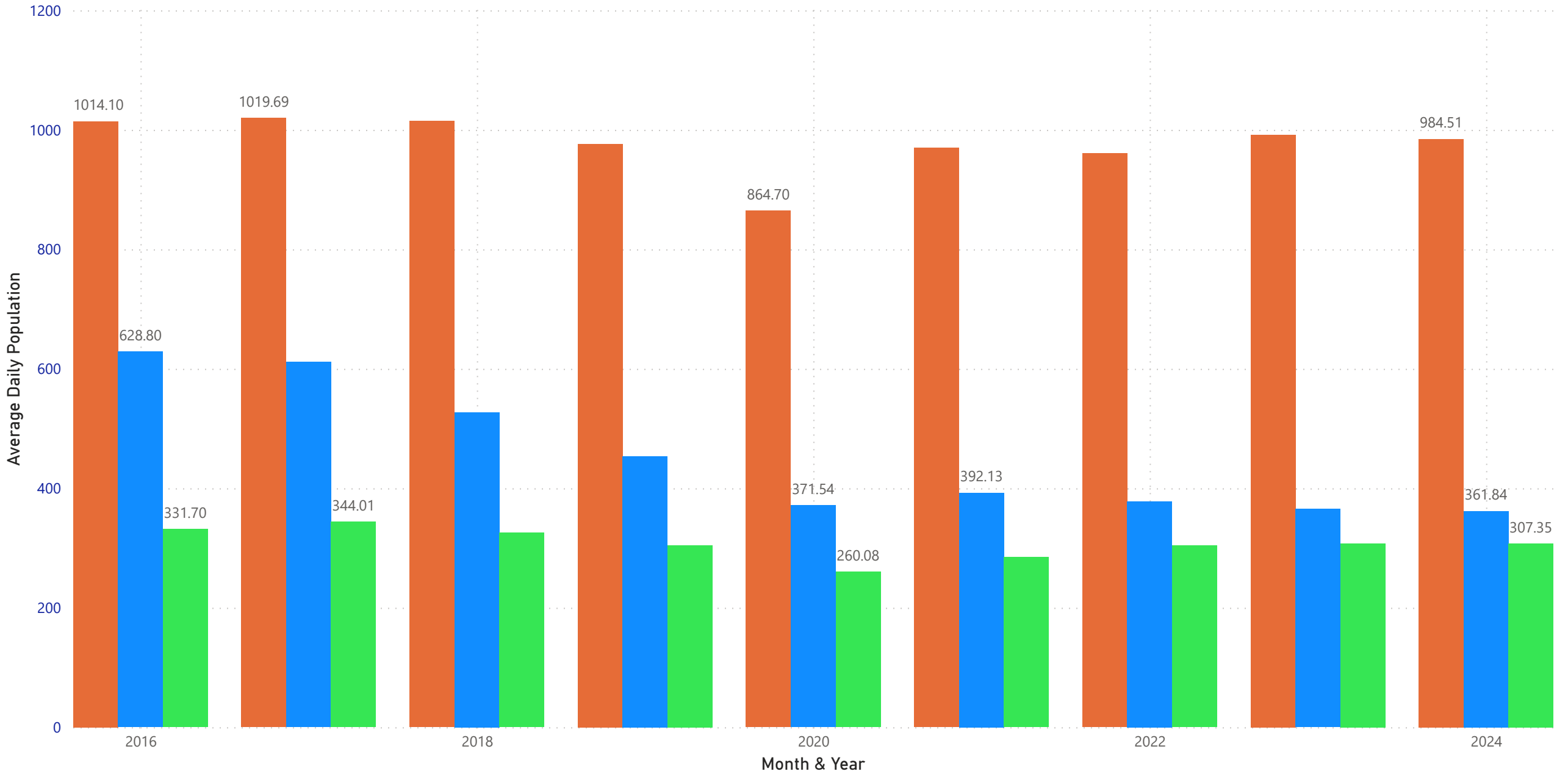
### Confined Average Daily Population (ADP) by Felony & Misdemeanor

Felony Misdemeanor



### Felony - Confined Average Daily Population (ADP) by Race & Ethnicity

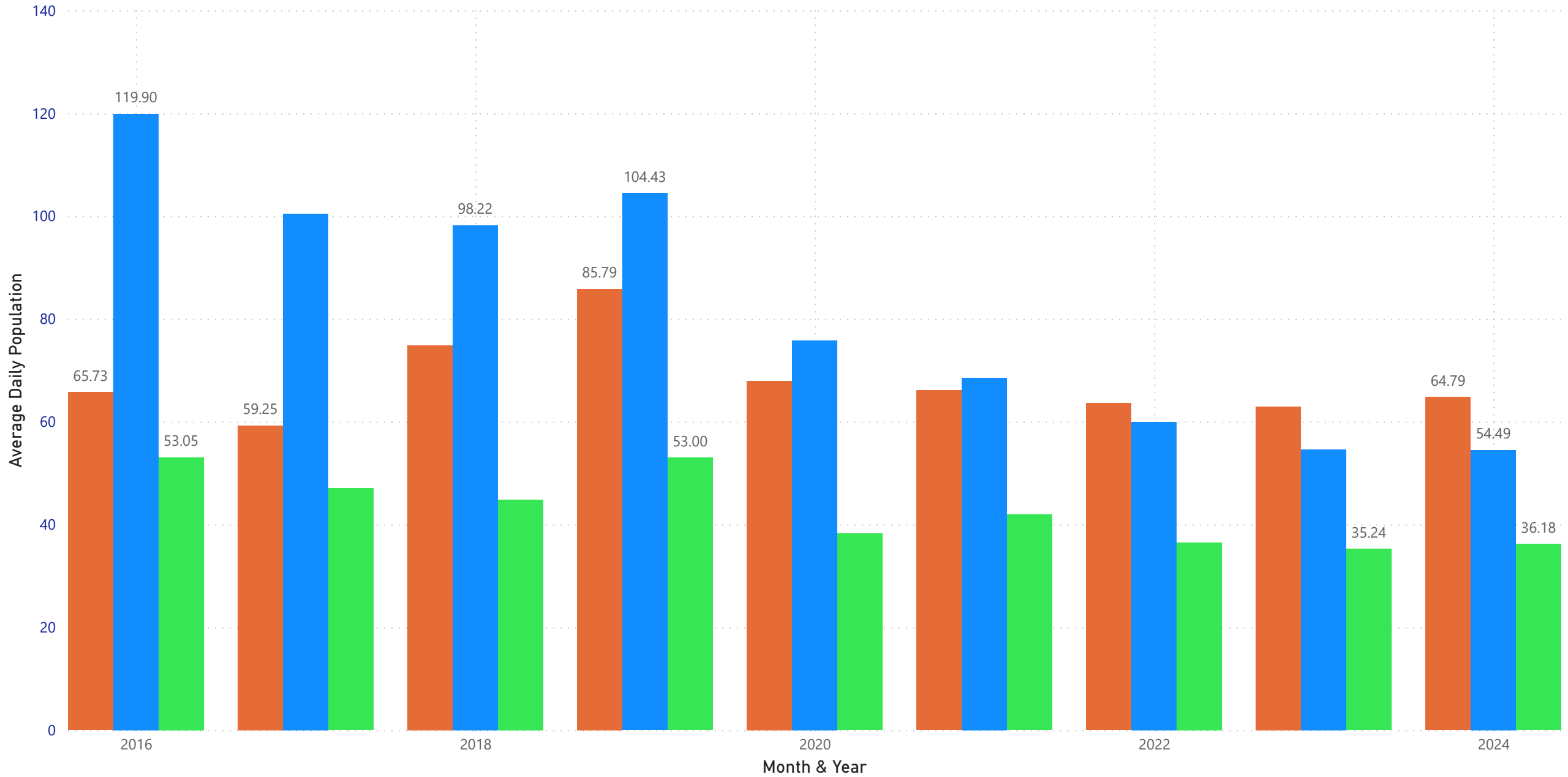
● Black ● White ● LatinX





### Misdemeanor - Confined Average Daily Population (ADP) by Race & Ethnicity

● Black ● White ● LatinX



\* Our data quality improves when it sees the light of day. Your feedback and questions are always welcome. If you want to contribute please contact us below. Thank you.

Damir Kukec, Research and Planning Manager

[dkukec@pbcgov.org](mailto:dkukec@pbcgov.org)

561.355.1639



Supported by the John D. and Catherine T. MacArthur Foundation

