

Proposed **Paulette Burdick Park**

6363 Fair Green Road



PALM BEACH COUNTY
*Discover the Palm Beaches...
the Best of Everything*



Community Outreach Meeting

March 25, 2023

County Project Team

Facilities Development and Operations (FDO)

Isamí C. Ayala-Collazo, Director, FDO

Miradieu Aubourg, Senior Planner/Interim PM,
FDO Strategic Planning

Eric McClellan, Director FDO Strategic Planning

Ph. 561-233-0251

Parks and Recreation

Jennifer Cirillo, Director, Parks and Recreation

Bob Hamilton, Director Planning, Research and
Development, Parks and Recreation

Ph. 561-966-6651

Office of Community Revitalization (OCR)

Houston Tate, Director, OCR

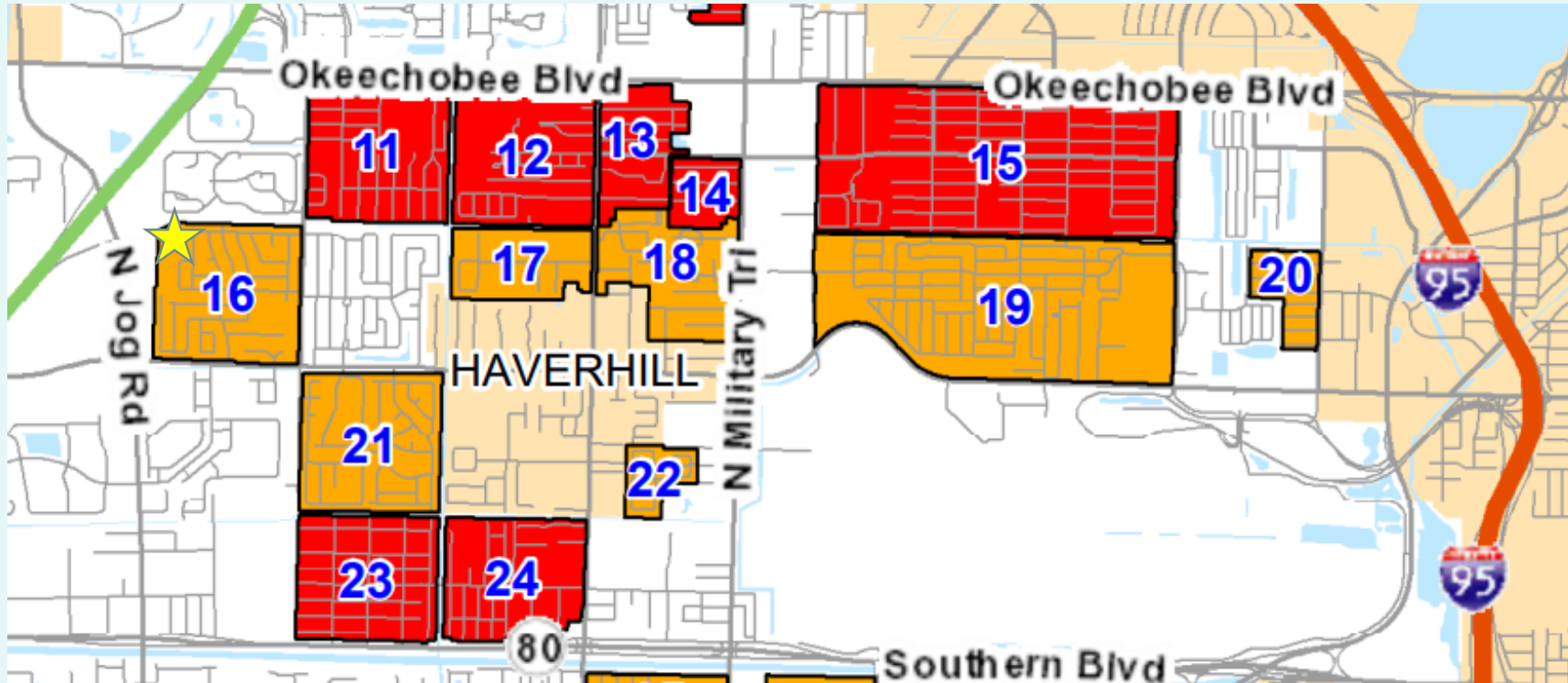
Ph. 561-233-5303

Paulette Burdick Park

Background

- \$5M allocated to Community Park New Development in the Infrastructure Sales Tax (IST) Project Plan
- Preference for land within or near Countywide Community Revitalization Team (CCRT) areas
- Parks & Recreation Department staff identified the subject site as a potential location for a new neighborhood park.
- **Description:** This project involves the construction of a new neighborhood park within the Cam Estates neighborhood adjacent to WUD Plant # 8 in suburban West Palm Beach. The park is intended to support a play ground area, pathway, basketball courts, fitness zone and grass open play area. The neighborhood park will service the CAM Estates, Meadowbrook and Plantation CCRT areas. The park will be developed in multiple phases as funding permits.

Paulette Burdick Park



- 1 Limestone Creek
- 2 Penn Park Area
- 3 Kennedy Estates
- 4 Cabana Colony
- 5 Pleasant Ridge - Juno Terrace
- 6 Juno Ridge Area
- 7 Elmwood Estates - Roan Lane Area
- 8 Parkway Village - Evergreen Acres
- 9 Gramercy Park
- 10 Old Trail
- 11 Plantation Area
- 12 Haverhill West
- 13 Haverhill East
- 14 Myla, Myrtle, Vilma Area
- 15 Westgate
- 16 Cam Estates/Meadowbrook Plats 1, 2 & 3
- 17 Stacey Area
- 18 Pine Ridge - Cherry Lane
- 19 Belvedere Homes
- 20 Belvedere Heights

PALM BEACH COUNTY CCRT Areas

- Neighborhood Core Area
- Neighborhood Enhancement Area
- Municipalities

Printed on: Dec 13, 2021



Printed by ISS/GIS Service Bureau

Planning, Zoning and Building Department

2300 N. Jog Road
West Palm Beach, FL 33411
(561) 233-5000

pzbmap@pbcgov.com
<http://discover.pbcgov.org/pzb/>

Document Path: S:\Work\FZBMaps\Web Maps\Batch_pdf\ccrt_areas.mxd

Paulette Burdick Park



Paulette Burdick Park

Benefits of Neighborhood Parks



- ✓ **Physical / Mental Health**
- ✓ **Connect People and Communities**
- ✓ **Beneficial for Youth Development**
- ✓ **Gathering Spot for Community Events**
- ✓ **Environmental Friendly Space**
- ✓ **Passive / Compatible**
- ✓ **Increased Property Values**

Paulette Burdick Park

Proposed Amenities

- **Playground**
- **Pathway**
- **Basketball courts**
- **Fitness zone**
- **Open space (grassed)**
- **Signage**
- **Maintained and Managed by PBC Parks and Recreation Department**
- **Daily: Sunrise - Sunset**

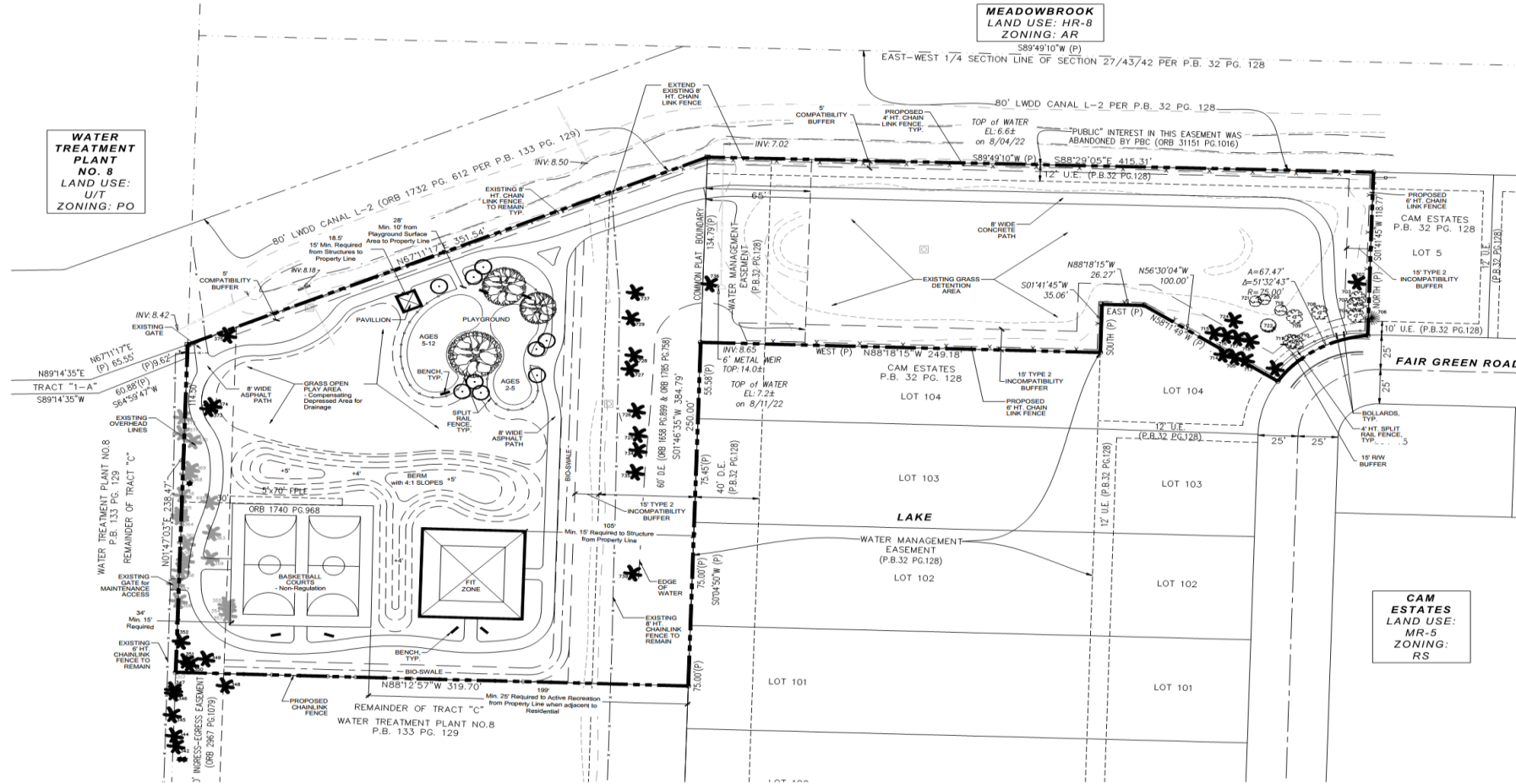
Paulette Burdick Park

Current Aerial Photo



Paulette Burdick Park

Schematic Design Site Plan



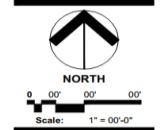
urban design studio

Urban Design
Land Planning
Landscape Architecture

610 Clematis Street, Suite C102
West Palm Beach, FL 33401
561.366.1100 FAX: 561.366.1111
www.udstflorida.com
#400001938

Copyright: All ideas, designs, arrangements, and items represented by this drawing are owned by and the property of the designer, and may be used for the exclusive use of the specified project. These ideas, designs, arrangements, or items shall not be used by, or reproduced in any form, text or reproduction, without the written permission of the designer.

Paulette Burdick Park
Palm Beach County, Florida
Site Plan



Date: Oct. 12, 2022
Project No.: 18-036-001
Designed By: H.E.C.
Drawn By: H.E.C.
Checked By: C.W.W.

Revision Dates:
08/01/2013: Submittal Design

SP-1
of 1

Paulette Burdick Park

Tentative Schedule

- Schematic Design: *In Progress*
- Schematic Design Approval: *March 2023 - May 2023*
- Design and Construction Documents: *June 2023 - November 2023*
- Permitting: *November 2023 - February 2024*
- Contractor Procurement / Pricing: *February 2024 - May 2024*
- Construction Commencement: *Summer 2024*
- Opening: *Spring 2025**

**Note: Improvements will likely be added in phases based upon funding availability*

Paulette Burdick Park

Information Resources

FDO Open Projects Web Page:

<https://discover.pbcgov.org/fdo/Pages/OpenProjects.aspx>

FDO Personnel:

Miradieu Aubourg, Senior Planner / Interim Project Manager
(561) 233-0251

Maubourg@pbcgov.org

Parks & Recreation Personnel:

Bob Hamilton, Director Planning, Research and Development
(561) 966-6651

RHamilton@pbcgov.org

Proposed **Paulette Burdick Park**



PALM BEACH COUNTY
*Discover the Palm Beaches...
the Best of Everything*

