

Mangonia Park Future Land Use

- Tri-Rail Station
- Rail Line
- Residential Estate (1 du/ac)
- Residential Low (5 du/ac)
- Residential High (14 du/ac)
- Commercial
- Commercial/Flex
- Commercial Recreation
- Municipal
- Park
- Industrial
- Proposed Bio-Science Overlay
- Roads

*THE COLORS HAS BEEN ADDED TO CLARIFY THE VARIOUS FUTURE LAND USES AND ARE NOT PART OF THE OFFICIAL FUTURE LAND USE MAP.

*THE RAIL LINES IN ORANGE AND THE LEGEND "MANGONIA PARK TRI-RAIL" SHOWN ON THE MAP ARE FOR INFORMATIONAL PURPOSES ONLY AND ARE NOT PART OF THE OFFICIAL FUTURE LAND USE MAP. IT IS NOT THE INTEND OF THE PROPOSED AMENDMENT TO ADD THESE RAIL LINES AND THIS LEGEND TO THE FUTURE LAND USE MAP.

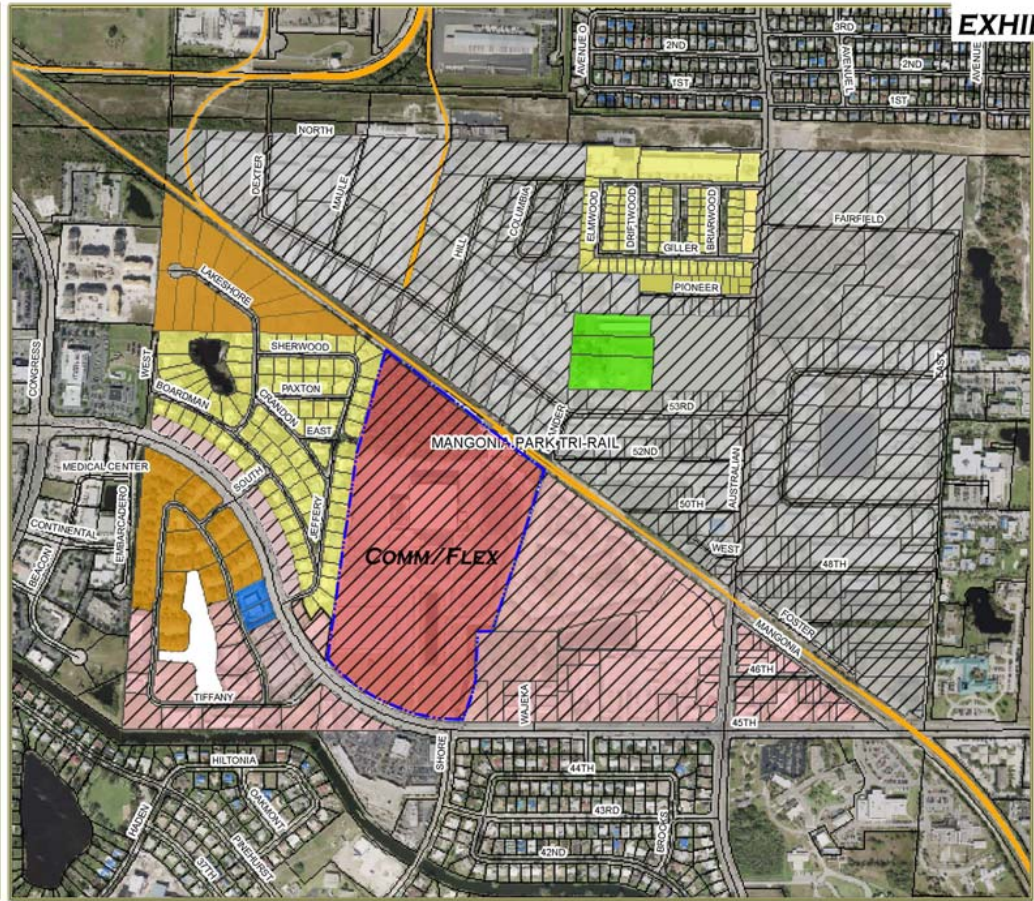
June 19, 2006



1:7,000

1 inch equals 583 feet

Sources: Palm Beach County MPO, Town of Mangonia Park, TCRPC
 Note: For planning purposes only. All distances are approximate.



*THIS IS NOT A COPY OF THE OFFICIAL FUTURE LAND USE MAP BUT IT ACCURATELY REFLECTS THE LOCATIONS AND EXTENT OF THE FUTURE LAND USES.

PROPOSED FUTURE LAND USE MAP

45TH STREET COMMERCE CENTER

MICHAEL REDD & ASSOCIATES, P.A.

APRIL 11, 2007

TOWN OF MANGONIA

PLANNING, LANDSCAPE ARCHITECTURE, RESEARCH
 ENVIRONMENTAL, SOCIAL, ECONOMIC, MASTER PLANNING